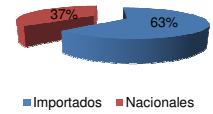




Patentamientos por Marcas - Mercado Total

	ago/11(a)	jul/11(b)	ago/10(c)	ago/09(d)	Var a-b	Var a-c	Var a-d	Ac. 11	Ac. 10	Var 11-10
Automovil	62.217	56.259	43.866	33.533	10,59%	41,83%	85,54%	460.655	350.112	31,57%
Comercial Liviano	13.847	13.264	11.030	7.166	4,40%	25,54%	93,23%	109.609	84.230	30,13%
Comercial Pesado	2.624	2.414	1.724	1.130	8,70%	52,20%	132,21%	17.883	11.357	57,46%
Otros Pesados	1.138	1.104	782	605	3,08%	45,52%	88,10%	8.487	6.363	33,38%
Total	79.826	73.041	57.402	42.434	9,29%	39,06%	88,12%	596.634	452.062	31,98%
Prom. diario	3.628	3.478	2.733	2.122				3.638	2.756	
Dias habiles	22	21	21	20				164	164	

Patentamientos por origen	
	ago/11 Ac. 11
Importados	49.803 376.656
Nacionales	30.023 219.978



Patentamientos Mensuales

	ene	feb	mar	abr	may	jun	jul	ago	sep	oct	nov	dic
2011	104.107	60.179	67.605	65.373	67.986	78.517	73.041	79.826				
2010	78.466	44.760	57.287	50.946	50.820	54.810	57.571	57.402	64.052	53.828	54.042	38.762
Var% 11-10	32,68%	34,45%	18,01%	28,32%	33,78%	43,25%	26,87%	39,06%	-100,00%	-100,00%	-100,00%	-100,00%
2009	73.927	39.075	41.300	40.533	40.147	44.101	46.631	42.434	46.020	39.962	37.493	23.282
2008	85.810	46.476	44.277	56.149	56.809	49.082	58.414	51.110	56.196	51.035	35.527	19.890

Patentamientos por Marcas - Totales

Marca	2011				2011		2010		2010		2011-2010		
	ago/11(a)	Part %	ago/10(c)	Part %	ene - ago	Part %	ene - ago	Part %	Part %				
Volkswagen	16.649	21,13%	9.689	17,09%	15.845	22,00%	71,83%	5,07%	120.136	20,40%	85.226	19,10%	40,96%
Chevrolet	13.214	16,77%	8.725	15,39%	10.938	15,18%	51,45%	20,81%	91.152	15,48%	69.090	15,48%	31,93%
Ford	10.243	13,00%	6.786	11,97%	6.557	9,15%	28,87%	10,89%	76.294	12,95%	56.144	12,58%	35,89%
Renault	8.948	11,36%	7.741	13,65%	9.004	12,50%	15,59%	-0,62%	68.815	11,68%	54.560	12,22%	26,13%
Fiat	9.568	12,14%	5.431	9,58%	8.173	11,35%	76,17%	17,07%	60.655	10,30%	46.379	10,39%	30,78%
Peugeot	7.271	9,23%	5.642	9,95%	6.557	9,10%	28,87%	10,89%	52.541	8,92%	38.240	8,57%	37,40%
Toyota	2.878	3,65%	2.484	4,38%	3.359	4,66%	15,86%	-14,32%	26.558	4,51%	22.667	5,08%	17,17%
Citroen	3.208	4,07%	2.402	4,24%	2.583	3,59%	33,56%	24,20%	22.582	3,83%	16.316	3,66%	38,40%
Honda	1.070	1,36%	1.998	3,52%	1.177	1,63%	-46,45%	-9,09%	14.227	2,42%	14.258	3,19%	-0,22%
Mercedes Benz	1.387	1,76%	1.121	1,98%	1.291	1,79%	23,73%	7,44%	11.188	1,90%	8.601	1,93%	30,08%
Nissan	694	0,88%	962	1,70%	629	0,87%	-27,86%	10,33%	10.518	1,79%	6.278	1,41%	67,54%
Hyundai	229	0,29%	491	0,87%	343	0,48%	-53,36%	-33,24%	4.669	0,79%	3.542	0,79%	31,82%
Iveco	601	0,76%	452	0,80%	463	0,64%	32,96%	29,81%	3.928	0,67%	2.336	0,52%	68,15%
Audi	582	0,74%	372	0,66%	472	0,66%	56,45%	23,31%	3.813	0,65%	3.041	0,68%	25,39%
Dodge	398	0,51%	252	0,44%	265	0,37%	57,94%	50,19%	3.201	0,54%	2.104	0,47%	52,14%
Chery	396	0,50%	195	0,34%	397	0,55%	103,08%	-0,25%	3.017	0,51%	1.379	0,31%	118,78%
Suzuki	18	0,02%	515	0,91%	56	0,08%	-96,50%	-67,86%	2.780	0,47%	5.237	1,17%	-46,92%
Kia	306	0,39%	289	0,51%	210	0,29%	5,88%	45,71%	2.122	0,36%	1.984	0,44%	6,96%
Scania	281	0,36%	124	0,22%	348	0,48%	126,61%	-19,25%	1.890	0,32%	882	0,20%	114,29%
BMW	22	0,03%	246	0,43%	36	0,05%	-91,06%	-38,89%	1.581	0,27%	2.551	0,57%	-38,02%
Agrale	129	0,16%	109	0,19%	102	0,14%	18,35%	26,47%	984	0,17%	590	0,13%	66,78%
Jeep	150	0,19%	68	0,12%	98	0,14%	120,59%	53,06%	921	0,16%	700	0,16%	31,57%
Volvo	131	0,17%	61	0,11%	136	0,19%	114,75%	-3,68%	827	0,14%	439	0,10%	88,38%
Mitsubishi	83	0,11%	116	0,20%	90	0,12%	-28,45%	-7,78%	820	0,14%	829	0,19%	-1,09%
Chrysler	22	0,03%	122	0,22%	44	0,06%	-81,97%	-50,00%	722	0,12%	586	0,13%	23,21%
Randon	66	0,08%	61	0,11%	67	0,09%	8,20%	-1,49%	605	0,10%	445	0,10%	35,96%
Subaru	45	0,06%	61	0,11%	30	0,04%	-26,23%	50,00%	433	0,07%	437	0,10%	-0,92%
Seat	4	0,01%	77	0,14%	3	0,00%	-94,81%	33,33%	377	0,06%	409	0,09%	-7,82%
Alfa Romeo	44	0,06%	19	0,03%	38	0,05%	131,58%	15,79%	336	0,06%	163	0,04%	106,13%
Smart	32	0,04%		0,00%	28	0,04%	N/D	14,29%	304	0,05%		0,00%	N/D
Puma de Tat	33	0,04%	11	0,02%	27	0,04%	200,00%	22,22%	264	0,04%	198	0,04%	33,33%
MONTENEGRO	38	0,05%	14	0,02%	21	0,03%	171,43%	80,95%	239	0,04%	142	0,03%	68,31%
Mini	7	0,01%	25	0,04%	8	0,01%	-72,00%	-12,50%	237	0,04%	359	0,08%	-33,98%
DFM	24	0,03%	3	0,01%	17	0,02%	700,00%	41,18%	97	0,02%	16	0,00%	506,25%
Porsche	8	0,01%	17	0,03%	2	0,00%	-52,94%	300,00%	72	0,01%	79	0,02%	-8,86%
Land Rover	5	0,01%	8	0,01%	7	0,01%	-37,50%	-28,57%	61	0,01%	54	0,01%	12,96%
Montesur	1	0,00%	3	0,01%	7	0,01%	-66,67%	-85,71%	34	0,01%	38	0,01%	-10,53%
Materfer		0,00%	4	0,01%	2	0,00%	-100,00%	-100,00%	10	0,00%	5	0,00%	100,00%
Jaguar	2	0,00%		0,00%	2	0,00%	N/D	0,00%	7	0,00%	8	0,00%	-12,50%
Ssangyong	3	0,00%		0,00%		0,00%	N/D	N/D	3	0,00%		0,00%	N/D
Mack		0,00%	1	0,00%		0,00%	-100,00%	N/D	2	0,00%	6	0,00%	-66,67%
Ferrari	1	0,00%	1	0,00%		0,00%	0,00%	N/D	1	0,00%	5	0,00%	-80,00%
Maserati		0,00%		0,00%		0,00%	N/D	N/D		0,00%	1	0,00%	-100,00%
Total	78.791		56.698		72.032				589.023		446.324		

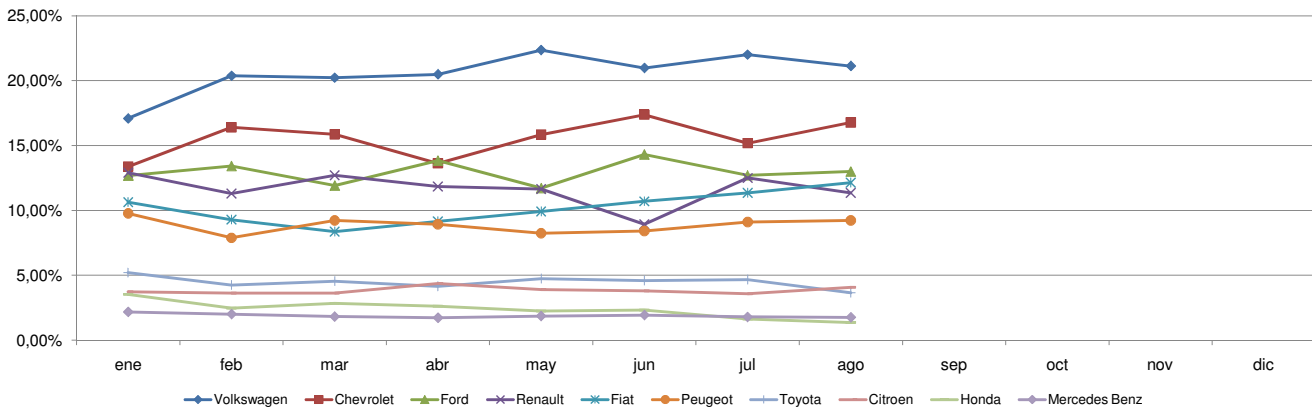


Patentamientos por Marcas - Mercado Total

Patentamientos por Marcas - Autos + Livianos									2011	2011	2010	2010	Var
Marca	ago/11(a)	Part %	ago/10(c)	Part %	jul/11(e)	Part %	Var a-c	Var a-e	ene - ago	Part %	ene - ago	Part %	2011-2010
Volkswagen	16.458	21,64%	9.558	17,41%	15.643	22,50%	72,19%	5,21%	118.457	20,77%	84.180	19,38%	40,72%
Chevrolet	13.214	17,37%	8.725	15,89%	10.938	15,73%	51,45%	20,81%	91.152	15,98%	69.090	15,91%	31,93%
Ford	9.734	12,80%	6.490	11,82%	8.792	12,65%	49,98%	10,71%	73.587	12,90%	54.036	12,44%	36,18%
Renault	8.866	11,66%	7.718	14,06%	8.922	12,83%	14,87%	-0,63%	68.390	11,99%	54.330	12,51%	25,88%
Fiat	9.568	12,58%	5.431	9,89%	8.173	11,76%	76,17%	17,07%	60.655	10,64%	46.379	10,68%	30,78%
Peugeot	7.271	9,56%	5.642	10,28%	6.557	9,43%	28,87%	10,89%	52.541	9,21%	38.240	8,80%	37,40%
Toyota	2.878	3,78%	2.484	4,52%	3.359	4,83%	15,86%	-14,32%	26.558	4,66%	22.667	5,22%	17,17%
Citroen	3.208	4,22%	2.402	4,38%	2.583	3,72%	33,56%	24,20%	22.582	3,96%	16.316	3,76%	38,40%
Honda	1.070	1,41%	1.998	3,64%	1.177	1,69%	-46,45%	-9,09%	14.227	2,49%	14.258	3,28%	-0,22%
Nissan	694	0,91%	962	1,75%	629	0,90%	-27,86%	10,33%	10.518	1,84%	6.278	1,45%	67,54%
Mercedes Benz	589	0,77%	539	0,98%	516	0,74%	9,28%	14,15%	5.194	0,91%	4.481	1,03%	15,91%
Hyundai	211	0,28%	462	0,84%	314	0,45%	-54,33%	-32,80%	4.405	0,77%	3.354	0,77%	31,34%
Audi	582	0,77%	372	0,68%	472	0,68%	56,45%	23,31%	3.813	0,67%	3.041	0,70%	25,39%
Dodge	398	0,52%	252	0,46%	265	0,38%	57,94%	50,19%	3.201	0,56%	2.104	0,48%	52,14%
Chery	396	0,52%	195	0,36%	397	0,57%	103,08%	-0,25%	3.017	0,53%	1.379	0,32%	118,78%
Suzuki	18	0,02%	515	0,94%	56	0,08%	-96,50%	-67,86%	2.780	0,49%	5.237	1,21%	-46,92%
Kia	306	0,40%	289	0,53%	210	0,30%	5,88%	45,71%	2.122	0,37%	1.984	0,46%	6,96%
BMW	22	0,03%	246	0,45%	36	0,05%	-91,06%	-38,89%	1.581	0,28%	2.551	0,59%	-38,02%
Iveco	149	0,20%	85	0,15%	110	0,16%	75,29%	35,45%	991	0,17%	623	0,14%	59,07%
Jeep	150	0,20%	68	0,12%	98	0,14%	120,59%	53,06%	921	0,16%	700	0,16%	31,57%
Mitsubishi	83	0,11%	116	0,21%	90	0,13%	-28,45%	-7,78%	820	0,14%	829	0,19%	-1,09%
Chrysler	22	0,03%	122	0,22%	44	0,06%	-81,97%	-50,00%	722	0,13%	586	0,13%	23,21%
Subaru	45	0,06%	61	0,11%	30	0,04%	-26,23%	50,00%	433	0,08%	437	0,10%	-0,92%
Seat	4	0,01%	77	0,14%	3	0,00%	-94,81%	33,33%	377	0,07%	409	0,09%	-7,82%
Alfa Romeo	44	0,06%	19	0,03%	38	0,05%	131,58%	15,79%	336	0,06%	163	0,04%	106,13%
Smart	32	0,04%		0,00%	28	0,04%	N/D	14,29%	304	0,05%		0,00%	N/D
Mini	7	0,01%	25	0,05%	8	0,01%	-72,00%	-12,50%	237	0,04%	359	0,08%	-33,98%
Volvo	25	0,03%	17	0,03%	24	0,03%	47,06%	4,17%	198	0,03%	184	0,04%	7,61%
Porsche	8	0,01%	17	0,03%	2	0,00%	-52,94%	300,00%	72	0,01%	79	0,02%	-8,86%
Land Rover	5	0,01%	8	0,01%	7	0,01%	-37,50%	-28,57%	61	0,01%	54	0,01%	12,96%
Jaguar	2	0,00%		0,00%	2	0,00%	N/D	0,00%	7	0,00%	8	0,00%	-12,50%
Ssangyong	3	0,00%		0,00%		0,00%	N/D	N/D	3	0,00%		0,00%	N/D
Ferrari	1	0,00%	1	0,00%		0,00%	0,00%	N/D	1	0,00%	5	0,00%	-80,00%
Maserati		0,00%		0,00%		0,00%	N/D	N/D		0,00%	1	0,00%	-100,00%
Total	76.063		54.896		69.523				570.263		434.342		

Patentamientos por Marcas - Camiones + Buses									2011	2011	2010	2010	Var
Marca	ago/11(a)	Part %	ago/10(c)	Part %	jul/11(e)	Part %	Var a-c	Var a-e	ene - ago	Part %	ene - ago	Part %	2011-2010
Mercedes Benz	798	29,25%	582	32,30%	775	30,89%	37,11%	2,97%	5.994	31,95%	4.120	34,38%	45,49%
Iveco	452	16,57%	367	20,37%	353	14,07%	23,16%	28,05%	2.937	15,66%	1.713	14,30%	71,45%
Ford	509	18,66%	296	16,43%	365	14,55%	71,96%	39,45%	2.707	14,43%	2.108	17,59%	28,42%
Scania	281	10,30%	124	6,88%	348	13,87%	126,61%	-19,25%	1.890	10,07%	882	7,36%	114,29%
Volkswagen	191	7,00%	131	7,27%	202	8,05%	45,80%	-5,45%	1.679	8,95%	1.046	8,73%	60,52%
Agrale	129	4,73%	109	6,05%	102	4,07%	18,35%	26,47%	984	5,25%	590	4,92%	66,78%
Volvo	106	3,89%	44	2,44%	112	4,46%	140,91%	-5,36%	629	3,35%	255	2,13%	146,67%
Randon	66	2,42%	61	3,39%	67	2,67%	8,20%	-1,49%	605	3,22%	445	3,71%	35,96%
Renault	82	3,01%	23	1,28%	82	3,27%	256,52%	0,00%	425	2,27%	230	1,92%	84,78%
Hyundai	18	0,66%	29	1,61%	29	1,16%	-37,93%	-37,93%	264	1,41%	188	1,57%	40,43%
Puma de Tat	33	1,21%	11	0,61%	27	1,08%	200,00%	22,22%	264	1,41%	198	1,65%	33,33%
MONTENEGRO	38	1,39%	14	0,78%	21	0,84%	171,43%	80,95%	239	1,27%	142	1,19%	68,31%
DFM	24	0,88%	3	0,17%	17	0,68%	700,00%	41,18%	97	0,52%	16	0,13%	506,25%
Montesur	1	0,04%	3	0,17%	7	0,28%	-66,67%	-85,71%	34	0,18%	38	0,32%	-10,53%
Materfer		0,00%	4	0,22%	2	0,08%	-100,00%	-100,00%	10	0,05%	5	0,04%	100,00%
Mack		0,00%	1	0,06%		0,00%	-100,00%	N/D	2	0,01%	6	0,05%	-66,67%
Total	2.728		1.802		2.509				18.760		11.982		

Participacion por Marcas - Evolucion Mensual





Patentamientos por Ranking de Automoviles - Mercado Total

Rank.	Ranking Por Modelos - Automoviles										
	Modelo	ago/11 (a)	ago/10 (b)	jul/11 (c)	Var a-b	Var a-c	Ac. 11	Part %	Ac. 10	Part %	Var 11-10
1	Volkswagen GOL	6.503	3.132	6.082	107,63%	6,92%	42.866	9,31%	33.482	9,56%	28,03%
2	Chevrolet CLASSIC	4.190	3.027	3.242	38,42%	29,24%	31.999	6,95%	10.433	2,98%	206,71%
3	Peugeot 207	3.457	3.193	2.889	8,27%	19,66%	24.959	5,42%	21.916	6,26%	13,88%
4	Ford ECOSPORT	2.197	1.658	2.080	32,51%	5,62%	19.952	4,33%	14.251	4,07%	40,00%
5	Renault SANDERO	2.867	2.191	3.066	30,85%	-6,49%	19.733	4,28%	15.242	4,35%	29,46%
6	Volkswagen SURAN	2.183	1.429	1.805	52,76%	20,94%	16.020	3,48%	15.541	4,44%	3,08%
7	Volkswagen BORA	1.970	1.221	2.211	61,34%	-10,90%	15.923	3,46%	8.229	2,35%	93,50%
8	Chevrolet AVEO	1.931	1.189	1.668	62,41%	15,77%	13.216	2,87%	8.264	2,36%	59,92%
9	Chevrolet AGILE	1.670	1.148	1.553	45,47%	7,53%	12.294	2,67%	8.530	2,44%	44,13%
10	Renault CLIO	1.149	1.846	1.131	-37,76%	1,59%	11.832	2,57%	9.143	2,61%	29,41%
11	Ford FOCUS II	1.687	970	1.510	73,92%	11,72%	11.736	2,55%	7.463	2,13%	57,26%
12	Volkswagen VOYAGE	1.503	803	1.517	87,17%	-0,92%	11.214	2,43%	8.128	2,32%	37,97%
13	Fiat SIENA	1.828	1.371	1.418	33,33%	28,91%	11.147	2,42%	9.440	2,70%	18,08%
14	Fiat PALIO	1.739	1.180	1.477	47,37%	17,74%	11.103	2,41%	11.242	3,21%	-1,24%
15	Ford KA	1.709	1.026	951	66,57%	79,71%	10.965	2,38%	9.856	2,82%	11,25%
16	Fiat UNO 2010	1.706		1.817	N/D	-6,11%	10.022	2,18%		0,00%	N/D
17	Volkswagen FOX	795	1.232	917	-35,47%	-13,30%	9.412	2,04%	6.234	1,78%	50,98%
18	Ford FIESTA KINETIC	1.334		1.314	N/D	1,52%	8.380	1,82%		0,00%	N/D
19	Ford FIESTA	584	1.107	975	-47,24%	-40,10%	7.752	1,68%	8.297	2,37%	-6,57%
20	Toyota COROLLA	930	692	1.054	34,39%	-11,76%	7.637	1,66%	6.317	1,80%	20,90%
21	Renault LOGAN	811	613	849	32,30%	-4,48%	7.432	1,61%	5.262	1,50%	41,24%
22	Citroen C3	999	480	711	108,13%	40,51%	7.306	1,59%	3.983	1,14%	83,43%
23	Volkswagen VENTO	1.564	565	1.359	176,81%	15,08%	6.654	1,44%	3.849	1,10%	72,88%
24	Citroen C4	885	931	611	-4,94%	44,84%	6.535	1,42%	5.919	1,69%	10,41%
25	Chevrolet MERIVA	1.079	596	854	81,04%	26,35%	6.146	1,33%	5.112	1,46%	20,23%
26	Fiat PUNTO	876	710	719	23,38%	21,84%	6.070	1,32%	6.910	1,97%	-12,16%
27	Renault FLUENCE	948		755	N/D	25,56%	5.979	1,30%		0,00%	N/D
28	Fiat UNO	998	787	638	26,81%	56,43%	5.976	1,30%	6.569	1,88%	-9,03%
29	Chevrolet CELTA	1.993		1.426	N/D	39,76%	5.656	1,23%		0,00%	N/D
30	Peugeot 307	514	635	497	-19,06%	3,42%	5.560	1,21%	5.648	1,61%	-1,56%
31	Honda FIT	498	883	410	-43,60%	21,46%	5.496	1,19%	6.196	1,77%	-11,30%
32	Nissan TIIDA	110	567	102	-80,60%	7,84%	5.463	1,19%	4.243	1,21%	28,75%
33	Renault SYMBOL	611	693	669	-11,83%	-8,67%	5.210	1,13%	5.601	1,60%	-6,98%
34	Peugeot 206	566	551	716	2,72%	-20,95%	5.130	1,11%	3.663	1,05%	40,05%
35	Chevrolet ASTRA	528	583	487	-9,43%	8,42%	4.405	0,96%	4.130	1,18%	6,66%
36	Peugeot 408	944		877	N/D	7,64%	4.317	0,94%		0,00%	N/D
37	Renault KANGOO	610	541	571	12,75%	6,83%	4.063	0,88%	4.267	1,22%	-4,78%
38	Honda CITY	262	345	371	-24,06%	-29,38%	3.697	0,80%	3.788	1,08%	-2,40%
39	Peugeot PARTNER	569	343	482	65,89%	18,05%	3.655	0,79%	1.648	0,47%	121,78%
40	Fiat IDEA	428	187	353	128,88%	21,25%	3.277	0,71%	1.786	0,51%	83,48%
41	Dodge JOURNEY	397	209	264	89,95%	50,38%	3.161	0,69%	1.616	0,46%	95,61%
42	Chevrolet CRUZE	348		345	N/D	0,87%	2.878	0,62%		0,00%	N/D
43	Suzuki FUN	15	428	53	-96,50%	-71,70%	2.196	0,48%	4.546	1,30%	-51,69%
44	Citroen PICASSO	203	310	251	-34,52%	-19,12%	2.186	0,47%	2.316	0,66%	-5,61%
45	Citroen BERLINGO	252	339	202	-25,66%	24,75%	2.093	0,45%	1.406	0,40%	48,86%
46	Chevrolet CORSA	27	688	36	-96,08%	-25,00%	1.819	0,39%	20.335	5,81%	-91,05%
47	Nissan SENTRA	142		166	N/D	-14,46%	1.817	0,39%		0,00%	N/D
48	Chevrolet VECTRA	154	252	150	-38,89%	2,67%	1.659	0,36%	2.536	0,72%	-34,58%
49	Hyundai I 10	33	167	42	-80,24%	-21,43%	1.515	0,33%	577	0,16%	162,56%
50	Honda CIVIC	145	223	76	-34,98%	90,79%	1.498	0,33%	1.584	0,45%	-5,43%
51	Otros	2.775	2.825	2.540	-1,77%	9,25%	23.643	5,13%	24.614	7,03%	-3,94%
Total		62.216	43.866	56.259			460.654	1	350.112		



Patentamientos por Ranking de Livianos y Pesados - Mercado Total

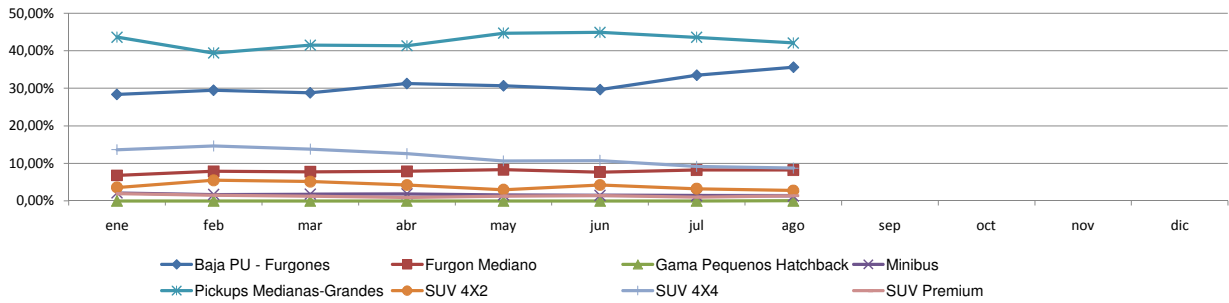
Rank.	Comercial Liviano										
	Modelo	ago/11 (a)	ago/10 (b)	jul/11 (c)	Var a-b	Var a-c	Ac. 11	Part %	Ac. 10	Part %	Var 11-10
1	Toyota HILUX	1.678	1.387	1.969	20,98%	-14,78%	15.194	13,86%	13.399	15,91%	13,40%
2	Volkswagen AMAROK	1.179	729	1.136	61,73%	3,79%	10.549	9,62%	3.156	3,75%	234,25%
3	Ford RANGER	1.627	1.109	1.374	46,71%	18,41%	9.959	9,09%	9.111	10,82%	9,31%
4	Renault KANGOO FURGON	1.198	975	1.150	22,87%	4,17%	8.484	7,74%	6.886	8,18%	23,21%
5	Peugeot PARTNER FURGON	913	652	801	40,03%	13,98%	6.641	6,06%	4.317	5,13%	53,83%
6	Chevrolet S-10	739	885	731	-16,50%	1,09%	6.600	6,02%	6.270	7,44%	5,26%
7	Fiat FIORINO	710	586	579	21,16%	22,63%	5.640	5,15%	5.469	6,49%	3,13%
8	Fiat STRADA	916	263	798	248,29%	14,79%	4.590	4,19%	2.062	2,45%	122,60%
9	Renault MASTER	446	301	452	48,17%	-1,33%	3.297	3,01%	2.100	2,49%	57,00%
10	Volkswagen SAVEIRO	397	250	378	58,80%	5,03%	3.256	2,97%	3.360	3,99%	-3,10%
11	Honda CRV	154	522	297	-70,50%	-48,15%	3.234	2,95%	2.411	2,86%	34,14%
12	Nissan FRONTIER	434	290	348	49,66%	24,71%	2.745	2,50%	1.424	1,69%	92,77%
13	Citroen BERLINGO FURGON	365	255	341	43,14%	7,04%	2.439	2,23%	2.216	2,63%	10,06%
14	Mercedes Benz SPRINTER	289	272	295	6,25%	-2,03%	2.318	2,11%	2.195	2,61%	5,60%
15	Toyota HILUX SW4	191	177	234	7,91%	-18,38%	1.761	1,61%	1.507	1,79%	16,85%
16	Chevrolet MONTANA	285		185	N/D	54,05%	1.478	1,35%		0,00%	N/D
17	Chery TIGGO	201	159	186	26,42%	8,06%	1.394	1,27%	1.305	1,55%	6,82%
18	Toyota RAV 4	51	156	55	-67,31%	-7,27%	1.381	1,26%	1.130	1,34%	22,21%
19	Ford KUGA	191	124	142	54,03%	34,51%	1.252	1,14%	569	0,68%	120,04%
20	Ford F 100	107	177	145	-39,55%	-26,21%	1.197	1,09%	1.381	1,64%	-13,32%
21	Otros	1.776	1.761	1.668	0,85%	6,47%	16.200	14,78%	13.962	16,58%	16,03%
Total		13.847	11.030	13.264			109.609	1	84.230		

Rank.	Comercial Pesado										
	Modelo	ago/11 (a)	ago/10 (b)	jul/11 (c)	Var a-b	Var a-c	Ac. 11	Part %	Ac. 10	Part %	Var 11-10
1	Iveco 170 E	245	259	204	-5,41%	20,10%	1.812	10,13%	1.020	8,98%	77,65%
2	Mercedes Benz BMO 368	89	87	105	2,30%	-15,24%	1.064	5,95%	468	4,12%	127,35%
3	Ford F-4000	179	73	174	145,21%	2,87%	1.024	5,73%	497	4,38%	106,04%
4	Ford CARGO 1722 E	24	108	26	-77,78%	-7,69%	593	3,32%	766	6,74%	-22,58%
5	Volkswagen 17220	54	46	60	17,39%	-10,00%	585	3,27%	301	2,65%	94,35%
6	Scania G340	93	33	61	181,82%	52,46%	525	2,94%	245	2,16%	114,29%
7	Mercedes Benz BMO 384	133	117	65	13,68%	104,62%	515	2,88%	896	7,89%	-42,52%
8	Mercedes Benz OF 1418	51	46	63	10,87%	-19,05%	478	2,67%	149	1,31%	220,81%
9	Mercedes Benz ATEGO 1725	57	43	63	32,56%	-9,52%	462	2,58%	264	2,32%	75,00%
10	Mercedes Benz 1624	56	40	71	40,00%	-21,13%	431	2,41%	136	1,20%	216,91%
11	Agrale MT15	54	33	43	63,64%	25,58%	418	2,34%	170	1,50%	145,88%
12	Scania P340	51	29	76	75,86%	-32,89%	414	2,32%	136	1,20%	204,41%
13	Iveco 450 E	87	48	65	81,25%	33,85%	397	2,22%	282	2,48%	40,78%
14	Mercedes Benz L5 1634	37	35	44	5,71%	-15,91%	388	2,17%	235	2,07%	65,11%
15	Mercedes Benz O-500	57	20	68	185,00%	-16,18%	379	2,12%	145	1,28%	161,38%
16	Mercedes Benz 710	48	31	47	54,84%	2,13%	348	1,95%	308	2,71%	12,99%
17	Volkswagen 13180	48	30	45	60,00%	6,67%	334	1,87%	191	1,68%	74,87%
18	Renault PREMIUM	64	16	65	300,00%	-1,54%	331	1,85%	133	1,17%	148,87%
19	Iveco 490 S	68	24	39	183,33%	74,36%	309	1,73%	170	1,50%	81,76%
20	Scania G380	54	11	40	390,91%	35,00%	295	1,65%	118	1,04%	150,00%
21	Otros	1.074	595	990	80,50%	8,48%	6.780	37,92%	4.727	41,62%	43,43%
Total		2.623	1.724	2.414			17.882	1	11.357		

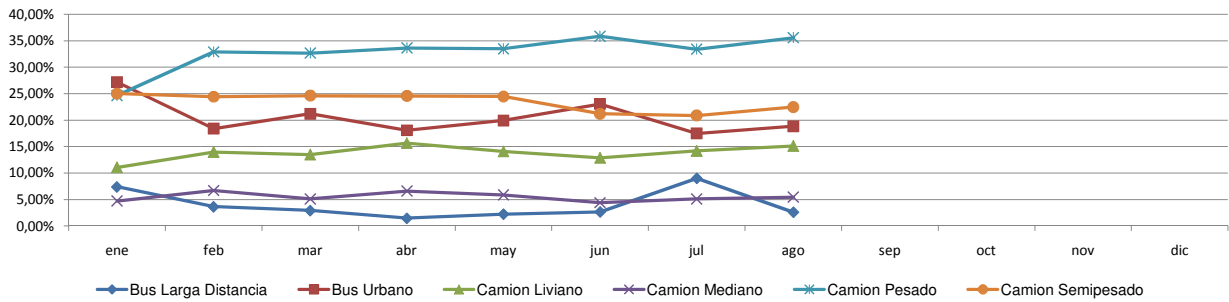


Patentamientos por Ranking de Livianos y Pesados - Mercado Total

Comercial Liviano



Comercial Pesado





Patentamientos por Provincias y Tipos -

Distrito	Automovil+Comercial Liviano							Comercial Pesado+Otros Pesados							Mercado Total					
	ago/11 (a)	ago/10 (b)	jul/11 (c)	Var a-b	Var a-c	Ac. 11	Ac. 10	Var 11-10	ago/11 (a)	ago/10 (b)	jul/11 (c)	Var a-b	Var a-c	Ac. 11	Ac. 10	Var 11-10	Ac. 11	Ac. 10	Var 11-10	Part %
GRAN BUENOS AIRES	13.432	9.610	12.085	39,77%	11,15%	100.176	77.189	29,78%	341	255	338	33,73%	0,89%	2.345	1.687	39,00%	102.521	78.876	29,98%	17,18%
CAPITAL FEDERAL	11.771	9.680	11.166	21,60%	5,42%	89.898	76.611	17,34%	1.007	692	906	45,52%	11,15%	7.263	5.011	44,94%	97.161	81.622	19,04%	16,28%
BUENOS AIRES	11.895	8.396	11.178	41,67%	6,41%	90.477	66.597	35,86%	440	293	409	50,17%	7,58%	2.999	2.089	43,56%	93.476	68.686	36,09%	15,67%
CORDOBA	7.511	5.786	6.856	29,81%	9,55%	57.065	44.509	28,21%	319	204	233	56,37%	36,91%	2.009	1.296	55,02%	59.074	45.805	28,97%	9,90%
SANTA FE	6.788	4.687	6.064	44,83%	11,94%	49.608	35.711	38,92%	305	230	288	32,61%	5,90%	2.276	1.475	54,31%	51.884	37.186	39,53%	8,70%
MENDOZA	3.077	2.199	2.719	39,93%	13,17%	21.943	16.766	30,88%	130	140	158	-7,14%	-17,72%	1.010	733	37,79%	22.953	17.499	31,17%	3,85%
ENTRE RIOS	2.076	1.361	2.001	52,53%	3,75%	15.985	11.176	43,03%	136	80	154	70,00%	-11,69%	993	644	54,19%	16.978	11.820	43,64%	2,85%
CORRIENTES	1.714	1.082	1.545	58,41%	10,94%	13.737	9.142	50,26%	151	103	164	46,60%	-7,93%	1.117	706	58,22%	14.854	9.848	50,83%	2,49%
TUCUMAN	2.041	1.174	1.637	73,85%	24,68%	13.621	9.680	40,71%	131	76	118	72,37%	11,02%	860	492	74,80%	14.481	10.172	42,36%	2,43%
SALTA	1.671	1.081	1.442	54,58%	15,88%	11.599	8.562	35,47%	105	86	86	22,09%	22,09%	852	608	40,13%	12.451	9.170	35,78%	2,09%
CHUBUT	1.547	1.105	1.382	40,00%	11,94%	11.433	8.996	27,09%	44	31	44	41,94%	0,00%	396	305	29,84%	11.829	9.301	27,18%	1,98%
NEUQUEN	1.478	1.046	1.418	41,30%	4,23%	10.958	8.255	32,74%	82	43	53	90,70%	54,72%	486	294	65,31%	11.444	8.549	33,86%	1,92%
CHACO	1.168	844	1.232	38,39%	-5,19%	9.228	6.487	42,25%	69	28	77	146,43%	-10,39%	510	312	63,46%	9.738	6.799	43,23%	1,63%
RIO NEGRO	1.084	822	1.039	31,87%	4,33%	8.545	6.408	33,35%	31	15	26	106,67%	19,23%	231	140	65,00%	8.776	6.548	34,03%	1,47%
MISIONES	1.123	668	945	68,11%	18,84%	8.186	5.648	44,94%	69	23	57	200,00%	21,05%	380	187	103,21%	8.566	5.835	46,80%	1,44%
SANTA CRUZ	1.047	869	933	20,48%	12,22%	8.034	6.754	18,95%	60	31	48	93,55%	25,00%	337	226	49,12%	8.371	6.980	19,93%	1,40%
JUJUY	848	587	755	44,46%	12,32%	6.777	5.181	30,80%	82	46	150	78,26%	-45,33%	754	565	33,45%	7.531	5.746	31,07%	1,26%
TIERRA DEL FUEGO	936	635	795	47,40%	17,74%	6.589	4.154	58,62%	50	20	48	150,00%	4,17%	331	135	145,19%	6.920	4.289	61,34%	1,16%
LA PAMPA	809	504	771	60,52%	4,93%	6.286	4.325	45,34%	25	13	21	92,31%	19,05%	148	98	51,02%	6.434	4.423	45,47%	1,08%
SAN JUAN	850	595	692	42,86%	22,83%	5.977	4.772	25,25%	58	32	40	81,25%	45,00%	365	229	59,39%	6.342	5.001	26,81%	1,06%
SANTIAGO DEL ESTERO	857	531	659	61,39%	30,05%	6.059	4.255	42,40%	51	23	27	121,74%	88,89%	281	161	74,53%	6.340	4.416	43,57%	1,06%
FORMOSA	642	525	706	22,29%	-9,07%	5.305	4.030	31,64%	32	23	37	39,13%	-13,51%	195	154	26,62%	5.500	4.184	31,45%	0,92%
SAN LUIS	670	455	634	47,25%	5,68%	5.287	3.692	43,20%	18	6	15	200,00%	20,00%	92	71	29,58%	5.379	3.763	42,94%	0,90%
CATAMARCA	535	328	456	63,11%	17,32%	4.038	2.729	47,97%	8	5	10	60,00%	-20,00%	66	39	69,23%	4.104	2.768	48,27%	0,69%
LA RIOJA	494	326	413	51,53%	19,61%	3.453	2.713	27,28%	18	8	11	125,00%	63,64%	74	63	17,46%	3.527	2.776	27,05%	0,59%



Patentamientos por Provincias y Tipos -

