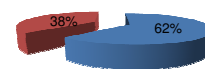




Patentamientos por Marcas - Mercado Total

	dic/11(a)	nov/11(b)	dic/10(c)	dic/09(d)	Var a-b	Var a-c	Var a-d	Ac. 11	Ac. 10	Var 11-10
Automovil	29.543	51.692	30.715	18.668	-42,85%	-3,82%	58,25%	663.788	513.823	29,19%
Comercial Liviano	7.134	10.969	6.198	3.502	-34,96%	15,10%	103,71%	155.555	121.673	27,85%
Comercial Pesado	1.424	2.015	1.191	706	-29,33%	19,56%	101,70%	26.167	17.607	48,62%
Otros Pesados	638	1.084	658	406	-41,14%	-3,04%	57,14%	12.473	9.638	29,41%
Total	38.739	65.760	38.762	23.282	-41,09%	-0,06%	66,39%	857.983	662.741	29,46%
Prom. diario	2.039	3.131	1.938	1.225				3.488	2.694	
Dias habiles	19	21	20	19				246	246	

Patentamientos por origen	
	dic/11 Ac. 11
Importados	22.658 536.223
Nacionales	16.081 321.760



■ Importados ■ Nacionales

Patentamientos Mensuales

	ene	feb	mar	abr	may	jun	jul	ago	sep	oct	nov	dic
2011	104.105	60.178	67.605	65.373	67.986	78.517	73.037	79.967	84.309	72.407	65.760	38.739
2010	78.466	44.759	57.287	50.946	50.819	54.810	57.571	57.401	64.050	53.828	54.042	38.762
Var% 11-10	32,68%	34,45%	18,01%	28,32%	33,78%	43,25%	26,86%	39,31%	31,63%	34,52%	21,68%	-0,06%
2009	73.927	39.075	41.300	40.533	40.147	44.100	46.630	42.434	46.020	39.962	37.493	23.282
2008	85.808	46.476	44.277	56.148	56.809	49.081	58.414	51.110	56.196	51.035	35.527	19.890

Patentamientos por Marcas - Totales

Marca	dic/11(a)	Part %	dic/10(c)	Part %	nov/11(e)	Part %	Var a-c	Var a-e	ene - dic	Part %	ene - dic	Part %	2010	2010	Var
Volkswagen	8.095	21,21%	9.287	24,33%	14.452	22,31%	-12,84%	-43,99%	173.321	20,47%	127.180	19,44%	19.44%	36,28%	
Chevrolet	5.569	14,59%	6.455	16,91%	9.186	14,18%	-13,73%	-39,38%	133.378	15,75%	101.317	15,49%	15,49%	31,64%	
Ford	5.184	13,59%	5.602	14,67%	8.000	12,35%	-7,46%	-35,20%	109.301	12,91%	81.167	12,41%	12,41%	34,66%	
Renault	6.557	17,18%	5.046	13,22%	10.265	15,84%	29,94%	-36,12%	106.596	12,59%	82.757	12,65%	12,65%	28,81%	
Fiat	3.117	8,17%	2.689	7,04%	7.221	11,14%	15,92%	-56,83%	88.159	10,41%	65.784	10,06%	10,06%	34,01%	
Peugeot	3.262	8,55%	2.924	7,66%	5.492	8,48%	11,56%	-40,60%	74.437	8,79%	56.034	8,57%	8,57%	32,84%	
Toyota	1.270	3,33%	1.008	2,64%	2.229	3,44%	25,99%	-43,02%	36.500	4,31%	31.025	4,74%	4,74%	17,65%	
Citroen	1.438	3,77%	995	2,61%	2.369	3,66%	44,52%	-39,30%	32.349	3,82%	23.496	3,59%	3,59%	37,68%	
Honda	541	1,42%	664	1,74%	1.010	1,56%	-18,52%	-46,44%	17.492	2,07%	20.655	3,16%	3,16%	-15,31%	
Mercedes Benz	593	1,55%	595	1,56%	970	1,50%	-0,34%	-38,87%	15.475	1,83%	12.203	1,87%	1,87%	26,81%	
Nissan	430	1,13%	599	1,57%	681	1,05%	-28,21%	-36,86%	13.803	1,63%	10.021	1,53%	1,53%	37,74%	
Iveco	596	1,56%	399	1,05%	655	1,01%	49,37%	-9,01%	6.311	0,75%	4.091	0,63%	0,63%	54,27%	
Hyundai	149	0,39%	216	0,57%	225	0,35%	-31,02%	-33,78%	5.687	0,67%	5.495	0,84%	0,84%	3,49%	
Audi	144	0,38%	97	0,25%	298	0,46%	48,45%	-51,68%	5.217	0,62%	3.940	0,60%	0,60%	32,41%	
Chery	281	0,74%	156	0,41%	435	0,67%	80,13%	-35,40%	4.620	0,55%	2.496	0,38%	0,38%	85,10%	
Dodge	264	0,69%	168	0,44%	241	0,37%	57,14%	9,54%	4.117	0,49%	2.887	0,44%	0,44%	42,60%	
Suzuki	6	0,02%	534	1,40%	8	0,01%	-98,88%	-25,00%	2.813	0,33%	7.362	1,13%	1,13%	-61,79%	
Kia	80	0,21%	84	0,22%	190	0,29%	-4,76%	-57,89%	2.804	0,33%	2.909	0,44%	0,44%	-3,61%	
Scania	87	0,23%	66	0,17%	167	0,26%	31,82%	-47,90%	2.608	0,31%	1.381	0,21%	0,21%	88,85%	
BMW	167	0,44%	91	0,24%	105	0,16%	83,52%	59,05%	1.885	0,22%	3.485	0,53%	0,53%	-45,91%	
Jeep	38	0,10%	71	0,19%	99	0,15%	-46,48%	-61,62%	1.417	0,17%	1.030	0,16%	0,16%	37,57%	
Agrale	19	0,05%	30	0,08%	84	0,13%	-36,67%	-77,38%	1.278	0,15%	897	0,14%	0,14%	42,47%	
Volvo	43	0,11%	48	0,13%	95	0,15%	-10,42%	-54,74%	1.227	0,14%	640	0,10%	0,10%	91,72%	
Mitsubishi	25	0,07%	35	0,09%	36	0,06%	-28,57%	-30,56%	1.026	0,12%	1.118	0,17%	0,17%	-8,23%	
Randon	49	0,13%	59	0,15%	97	0,15%	-16,95%	-49,48%	934	0,11%	711	0,11%	0,11%	31,36%	
Chrysler	3	0,01%	61	0,16%	1	0,00%	-95,08%	200,00%	737	0,09%	1.049	0,16%	0,16%	-29,74%	
Subaru	31	0,08%	51	0,13%	34	0,05%	-39,22%	-8,82%	568	0,07%	688	0,11%	0,11%	-17,44%	
Alfa Romeo	26	0,07%	24	0,06%	30	0,05%	8,33%	-13,33%	463	0,05%	286	0,04%	0,04%	61,89%	
Smart	20	0,05%	16	0,04%	32	0,05%	25,00%	-37,50%	428	0,05%	17	0,00%	0,00%	2417,65%	
Seat	1	0,00%	24	0,06%	1	0,00%	-95,83%	0,00%	385	0,05%	625	0,10%	0,10%	-38,40%	
Puma de Tat	10	0,03%	30	0,08%	6	0,01%	-66,67%	66,67%	348	0,04%	308	0,05%	0,05%	12,99%	
MONTENEGRO	10	0,03%	8	0,02%	17	0,03%	25,00%	-41,18%	319	0,04%	206	0,03%	0,03%	54,85%	
Mini	26	0,07%	16	0,04%	12	0,02%	62,50%	116,67%	291	0,03%	478	0,07%	0,07%	-39,12%	
DFM	13	0,03%	9	0,02%	29	0,04%	44,44%	-55,17%	184	0,02%	58	0,01%	0,01%	217,24%	
Porsche	2	0,01%	3	0,01%	7	0,01%	-33,33%	-71,43%	133	0,02%	96	0,01%	0,01%	38,54%	
Land Rover	9	0,02%	7	0,02%	7	0,01%	28,57%	28,57%	95	0,01%	89	0,01%	0,01%	6,74%	
Montesur		0,00%	3	0,01%	2	0,00%	-100,00%	-100,00%	43	0,01%	62	0,01%	0,01%	-30,65%	
Ssangyong	3	0,01%		0,00%	4	0,01%	N/D	-25,00%	21	0,00%		0,00%	0,00%	N/D	
Mack		0,00%		0,00%		0,00%	N/D	N/D	14	0,00%	9	0,00%	0,00%	55,56%	
Jaguar	1	0,00%		0,00%		0,00%	N/D	N/D	10	0,00%	9	0,00%	0,00%	11,11%	
Materfer		0,00%	4	0,01%		0,00%	-100,00%	N/D	10	0,00%	15	0,00%	0,00%	-33,33%	
Ferrari		0,00%		0,00%		0,00%	N/D	N/D	1	0,00%	5	0,00%	0,00%	-80,00%	
Maserati		0,00%		0,00%		0,00%	N/D	N/D		0,00%	1	0,00%	0,00%	-100,00%	
Total	38.159		38.174		64.792				846.805		654.082				

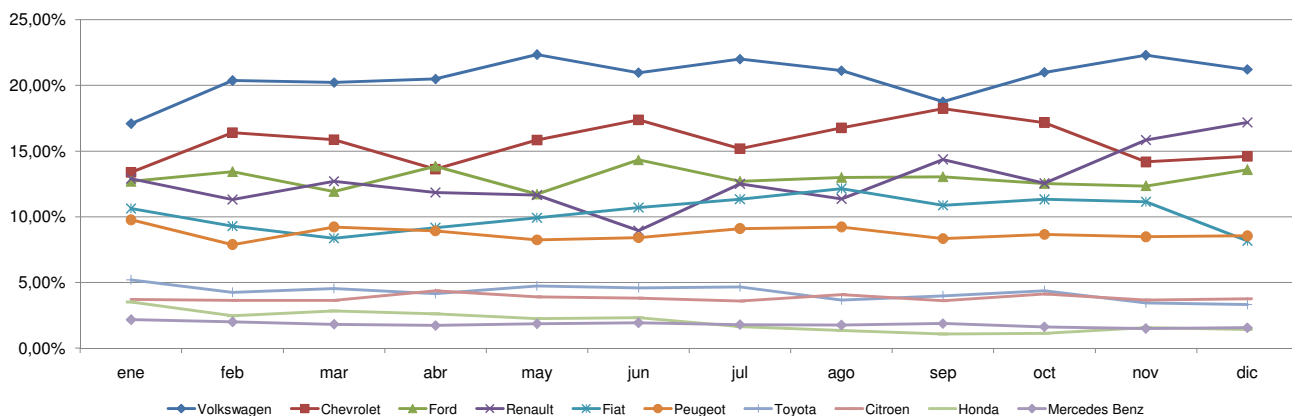


Patentamientos por Marcas - Mercado Total

Patentamientos por Marcas - Autos + Livianos								2011	2011	2010	2010	Var	
Marca	dic/11(a)	Part %	dic/10(c)	Part %	nov/11(e)	Part %	Var a-c	Var a-e	ene - dic	Part %	ene - dic	Part %	2011-2010
Volkswagen	7.990	21,78%	9.162	24,82%	14.302	22,82%	-12,79%	-44,13%	171.049	20,88%	125.471	19,74%	36,33%
Chevrolet	5.569	15,18%	6.455	17,49%	9.186	14,66%	-13,73%	-39,38%	133.378	16,28%	101.317	15,94%	31,64%
Renault	6.495	17,71%	5.006	13,56%	10.220	16,31%	29,74%	-36,45%	105.918	12,93%	82.347	12,96%	28,62%
Ford	4.933	13,45%	5.375	14,56%	7.606	12,14%	-8,22%	-35,14%	105.016	12,82%	77.941	12,26%	34,74%
Fiat	3.117	8,50%	2.689	7,28%	7.221	11,52%	15,92%	-56,83%	88.159	10,76%	65.784	10,35%	34,01%
Peugeot	3.262	8,89%	2.924	7,92%	5.492	8,76%	11,56%	-40,60%	74.437	9,08%	56.034	8,82%	32,84%
Toyota	1.270	3,46%	1.008	2,73%	2.229	3,56%	25,99%	-43,02%	36.500	4,45%	31.025	4,88%	17,65%
Citroen	1.438	3,92%	995	2,70%	2.369	3,78%	44,52%	-39,30%	32.349	3,95%	23.496	3,70%	37,68%
Honda	541	1,48%	664	1,80%	1.010	1,61%	-18,52%	-46,44%	17.492	2,13%	20.655	3,25%	-15,31%
Nissan	430	1,17%	599	1,62%	681	1,09%	-28,21%	-36,86%	13.803	1,68%	10.021	1,58%	37,74%
Mercedes Benz	182	0,50%	259	0,70%	382	0,61%	-29,73%	-52,36%	6.888	0,84%	6.245	0,98%	10,30%
Hyundai	147	0,40%	211	0,57%	221	0,35%	-30,33%	-33,48%	5.399	0,66%	5.227	0,82%	3,29%
Audi	144	0,39%	97	0,26%	298	0,48%	48,45%	-51,68%	5.217	0,64%	3.940	0,62%	32,41%
Chery	281	0,77%	156	0,42%	435	0,69%	80,13%	-35,40%	4.620	0,56%	2.496	0,39%	85,10%
Dodge	264	0,72%	168	0,46%	241	0,38%	57,14%	9,54%	4.117	0,50%	2.887	0,45%	42,60%
Suzuki	6	0,02%	534	1,45%	8	0,01%	-98,88%	-25,00%	2.813	0,34%	7.362	1,16%	-61,79%
Kia	80	0,22%	84	0,23%	190	0,30%	-4,76%	-57,89%	2.804	0,34%	2.909	0,46%	-3,61%
BMW	167	0,46%	91	0,25%	105	0,17%	83,52%	59,05%	1.885	0,23%	3.485	0,55%	-45,91%
Iveco	169	0,46%	117	0,32%	174	0,28%	44,44%	-2,87%	1.649	0,20%	1.115	0,18%	47,89%
Jeep	38	0,10%	71	0,19%	99	0,16%	-46,48%	-61,62%	1.417	0,17%	1.030	0,16%	37,57%
Mitsubishi	25	0,07%	35	0,09%	36	0,06%	-28,57%	-30,56%	1.026	0,13%	1.118	0,18%	-8,23%
Chrysler	3	0,01%	61	0,17%	1	0,00%	-95,08%	200,00%	737	0,09%	1.049	0,17%	-29,74%
Subaru	31	0,08%	51	0,14%	34	0,05%	-39,22%	-8,82%	568	0,07%	688	0,11%	-17,44%
Alfa Romeo	26	0,07%	24	0,07%	30	0,05%	8,33%	-13,33%	463	0,06%	286	0,05%	61,89%
Smart	20	0,05%	16	0,04%	32	0,05%	25,00%	-37,50%	428	0,05%	17	0,00%	2417,65%
Seat	1	0,00%	24	0,07%	1	0,00%	-95,83%	0,00%	385	0,05%	625	0,10%	-38,40%
Mini	26	0,07%	16	0,04%	12	0,02%	62,50%	116,67%	291	0,04%	478	0,08%	-39,12%
Volvo	7	0,02%	11	0,03%	28	0,04%	-36,36%	-75,00%	275	0,03%	248	0,04%	10,89%
Porsche	2	0,01%	3	0,01%	7	0,01%	-33,33%	-71,43%	133	0,02%	96	0,02%	38,54%
Land Rover	9	0,02%	7	0,02%	7	0,01%	28,57%	28,57%	95	0,01%	89	0,01%	6,74%
Ssangyong	3	0,01%		0,00%	4	0,01%	N/D	-25,00%	21	0,00%		0,00%	N/D
Jaguar	1	0,00%		0,00%		0,00%	N/D	N/D	10	0,00%	9	0,00%	11,11%
Ferrari		0,00%		0,00%		0,00%	N/D	N/D	1	0,00%	5	0,00%	-80,00%
Maserati		0,00%		0,00%		0,00%	N/D	N/D		0,00%	1	0,00%	-100,00%
Total	36.677		36.913		62.661				819.343		635.496		

Patentamientos por Marcas - Camiones + Buses								2011	2011	2010	2010	Var	
Marca	dic/11(a)	Part %	dic/10(c)	Part %	nov/11(e)	Part %	Var a-c	Var a-e	ene - dic	Part %	ene - dic	Part %	2011-2010
Mercedes Benz	411	27,73%	336	26,65%	588	27,59%	22,32%	-30,10%	8.587	31,27%	5.958	32,06%	44,13%
Iveco	427	28,81%	282	22,36%	481	22,57%	51,42%	-11,23%	4.662	16,98%	2.976	16,01%	56,65%
Ford	251	16,94%	227	18,00%	394	18,49%	10,57%	-36,29%	4.285	15,60%	3.226	17,36%	32,83%
Scania	87	5,87%	66	5,23%	167	7,84%	31,82%	-47,90%	2.608	9,50%	1.381	7,43%	88,85%
Volkswagen	105	7,09%	125	9,91%	150	7,04%	-16,00%	-30,00%	2.272	8,27%	1.709	9,20%	32,94%
Agrale	19	1,28%	30	2,38%	84	3,94%	-36,67%	-77,38%	1.278	4,65%	897	4,83%	42,47%
Volvo	36	2,43%	37	2,93%	67	3,14%	-2,70%	-46,27%	952	3,47%	392	2,11%	142,86%
Randon	49	3,31%	59	4,68%	97	4,55%	-16,95%	-49,48%	934	3,40%	711	3,83%	31,36%
Renault	62	4,18%	40	3,17%	45	2,11%	55,00%	37,78%	678	2,47%	410	2,21%	65,37%
Puma de Tat	10	0,67%	30	2,38%	6	0,28%	-66,67%	66,67%	348	1,27%	308	1,66%	12,99%
MONTENEGRO	10	0,67%	8	0,63%	17	0,80%	25,00%	-41,18%	319	1,16%	206	1,11%	54,85%
Hyundai	2	0,13%	5	0,40%	4	0,19%	-60,00%	-50,00%	288	1,05%	268	1,44%	7,46%
DFM	13	0,88%	9	0,71%	29	1,36%	44,44%	-55,17%	184	0,67%	58	0,31%	217,24%
Montesur		0,00%	3	0,24%	2	0,09%	-100,00%	-100,00%	43	0,16%	62	0,33%	-30,65%
Mack		0,00%		0,00%		0,00%	N/D	N/D	14	0,05%	9	0,05%	55,56%
Materfer		0,00%	4	0,32%		0,00%	-100,00%	N/D	10	0,04%	15	0,08%	-33,33%
Total	1.482		1.261		2.131				27.462		18.586		

Participacion por Marcas - Evolucion Mensual





Patentamientos por Ranking de Automoviles - Mercado Total

Ranking Por Modelos - Automoviles											
Rank.	Modelo	dic/11 (a)	dic/10 (b)	nov/11 (c)	Var a-b	Var a-c	Ac. 11	Part %	Ac. 10	Part %	Var 11-10
1	Volkswagen GOL	3.298	2.743	6.167	20,23%	-46,52%	64.145	9,66%	46.657	9,08%	37,48%
2	Chevrolet CLASSIC	2.012	2.472	3.269	-18,61%	-38,45%	46.238	6,97%	22.872	4,45%	102,16%
3	Peugeot 207	1.312	1.424	2.771	-7,87%	-52,65%	35.605	5,36%	30.606	5,96%	16,33%
4	Renault SANDERO	1.040	1.612	1.796	-35,48%	-42,09%	28.380	4,28%	24.309	4,73%	16,75%
5	Ford ECOSPORT	796	1.693	1.346	-52,98%	-40,86%	27.037	4,07%	21.402	4,17%	26,33%
6	Volkswagen SURAN	1.372	1.365	2.176	0,51%	-36,95%	24.233	3,65%	21.381	4,16%	13,34%
7	Volkswagen BORA	266	479	674	-44,47%	-60,53%	19.584	2,95%	11.529	2,24%	69,87%
8	Chevrolet AVEO	695	1.135	1.204	-38,77%	-42,28%	18.970	2,86%	13.520	2,63%	40,31%
9	Ford FOCUS II	1.210	670	1.849	80,60%	-34,56%	18.239	2,75%	10.949	2,13%	66,58%
10	Renault CLIO	1.273	800	1.406	59,13%	-9,46%	17.779	2,68%	14.650	2,85%	21,36%
11	Chevrolet AGILE	726	794	1.085	-8,56%	-33,09%	17.734	2,67%	12.815	2,49%	38,38%
12	Ford KA	1.271	916	1.992	38,76%	-36,19%	17.440	2,63%	14.005	2,73%	24,53%
13	Fiat SIENA	543	475	1.440	14,32%	-62,29%	16.341	2,46%	13.239	2,58%	23,43%
14	Volkswagen VOYAGE	737	918	1.223	-19,72%	-39,74%	15.618	2,35%	11.963	2,33%	30,55%
15	Fiat PALIO	433	489	1.132	-11,45%	-61,75%	15.524	2,34%	16.095	3,13%	-3,55%
16	Fiat UNO 2010	565	439	1.160	28,70%	-51,29%	14.614	2,20%	1.335	0,26%	994,68%
17	Volkswagen FOX	1.057	2.113	1.706	-49,98%	-38,04%	14.445	2,18%	13.152	2,56%	9,83%
18	Chevrolet CELTA	744		1.446	N/D	-48,55%	12.222	1,84%		0,00%	N/D
19	Ford FIESTA KINETIC	393	438	616	-10,27%	-36,20%	11.533	1,74%	861	0,17%	1239,49%
20	Renault LOGAN	687	609	837	12,81%	-17,92%	10.995	1,66%	8.211	1,60%	33,91%
21	Toyota COROLLA	406	244	807	66,39%	-49,69%	10.743	1,62%	8.679	1,69%	23,78%
22	Volkswagen VENTO	290	334	676	-13,17%	-57,10%	10.232	1,54%	6.096	1,19%	67,85%
23	Citroen C3	347	162	660	114,20%	-47,42%	9.949	1,50%	5.351	1,04%	85,93%
24	Renault FLUENCE	581	272	905	113,60%	-35,80%	9.655	1,45%	441	0,09%	2089,34%
25	Ford FIESTA	224	671	306	-66,62%	-26,80%	9.529	1,44%	11.274	2,19%	-15,48%
26	Fiat UNO	351	253	806	38,74%	-56,45%	9.011	1,36%	8.788	1,71%	2,54%
27	Citroen C4	347	385	619	-9,87%	-43,94%	8.973	1,35%	8.878	1,73%	1,07%
28	Chevrolet MERIVA	328	292	521	12,33%	-37,04%	8.652	1,30%	6.637	1,29%	30,36%
29	Fiat PUNTO	212	221	551	-4,07%	-61,52%	8.448	1,27%	8.819	1,72%	-4,21%
30	Peugeot 408	808	36	708	2144,44%	14,12%	7.424	1,12%	36	0,01%	20522,22%
31	Renault SYMBOL	242	390	420	-37,95%	-42,38%	7.080	1,07%	7.811	1,52%	-9,36%
32	Honda FIT	190	259	492	-26,64%	-61,38%	6.981	1,05%	9.122	1,78%	-23,47%
33	Nissan TIIDA	105	338	261	-68,93%	-59,77%	6.805	1,03%	6.529	1,27%	4,23%
34	Peugeot 307	114	316	262	-63,92%	-56,49%	6.794	1,02%	8.127	1,58%	-16,40%
35	Peugeot 206	190	437	398	-56,52%	-52,26%	6.764	1,02%	5.883	1,14%	14,98%
36	Renault KANGOO	422	308	521	37,01%	-19,00%	6.111	0,92%	6.253	1,22%	-2,27%
37	Chevrolet ASTRA	100	185	253	-45,95%	-60,47%	5.662	0,85%	5.716	1,11%	-0,94%
38	Peugeot PARTNER	237	205	382	15,61%	-37,96%	5.180	0,78%	2.949	0,57%	75,65%
39	Fiat IDEA	135	152	329	-11,18%	-58,97%	4.562	0,69%	2.567	0,50%	77,72%
40	Renault DUSTER	894		2.407	N/D	-62,86%	4.291	0,65%		0,00%	N/D
41	Honda CITY	43	153	117	-71,90%	-63,25%	4.098	0,62%	5.330	1,04%	-23,11%
42	Dodge JOURNEY	264	141	241	87,23%	9,54%	4.077	0,61%	2.280	0,44%	78,82%
43	Chevrolet CRUZE	225	116	315	93,97%	-28,57%	4.054	0,61%	528	0,10%	667,80%
44	Citroen PICASSO	105	163	168	-35,58%	-37,50%	2.933	0,44%	3.399	0,66%	-13,71%
45	Citroen BERLINGO	146	150	180	-2,67%	-18,89%	2.909	0,44%	2.289	0,45%	27,09%
46	Nissan SENTRA	103	82	192	25,61%	-46,35%	2.610	0,39%	247	0,05%	956,68%
47	Suzuki FUN	6	462	7	-98,70%	-14,29%	2.225	0,34%	6.381	1,24%	-65,13%
48	Citroen C3 PICASSO	123		273	N/D	-54,95%	2.061	0,31%		0,00%	N/D
49	Honda CIVIC	91	76	186	19,74%	-51,08%	1.969	0,30%	2.150	0,42%	-8,42%
50	Chevrolet CORSA	2	562	6	-99,64%	-66,67%	1.860	0,28%	22.639	4,41%	-91,78%
51	Otros	1.482	1.766	2.428	-16,08%	-38,96%	35.470	5,34%	39.073	7,60%	-9,22%
Total		29.543	30.715	51.692			663.788	1	513.823		



Patentamientos por Ranking de Livianos y Pesados - Mercado Total

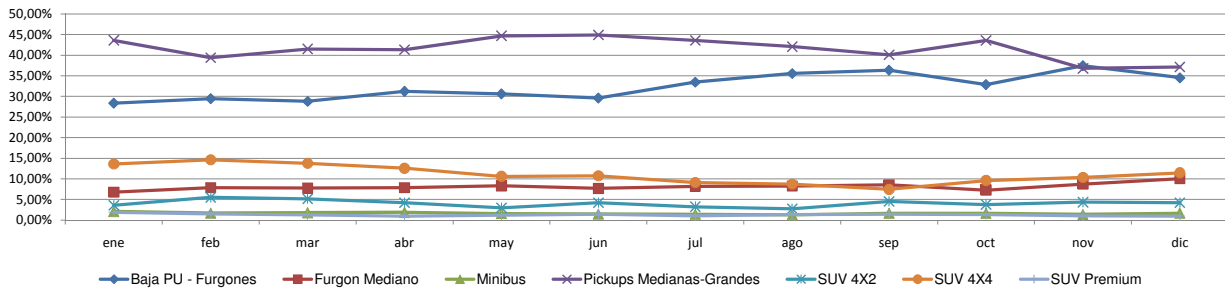
Comercial Liviano											
Rank.	Modelo	dic/11 (a)	dic/10 (b)	nov/11 (c)	Var a-b	Var a-c	Ac. 11	Part %	Ac. 10	Part %	Var 11-10
1	Toyota HILUX	679	627	1.100	8,29%	-38,27%	20.715	13,32%	18.245	15,00%	13,54%
2	Volkswagen AMAROK	682	896	1.159	-23,88%	-41,16%	14.948	9,61%	7.563	6,22%	97,65%
3	Ford RANGER	714	663	1.027	7,69%	-30,48%	14.535	9,34%	12.437	10,22%	16,87%
4	Renault KANGOO FURGON	797	677	1.146	17,73%	-30,45%	12.881	8,28%	9.956	8,18%	29,38%
5	Peugeot PARTNER FURGON	340	403	674	-15,63%	-49,55%	9.253	5,95%	6.664	5,48%	38,85%
6	Chevrolet S-10	311	348	433	-10,63%	-28,18%	8.792	5,65%	8.173	6,72%	7,57%
7	Fiat FLORINO	342	281	694	21,71%	-50,72%	8.482	5,45%	7.562	6,22%	12,17%
8	Fiat STRADA	295	127	694	132,28%	-57,49%	7.051	4,53%	3.291	2,70%	114,25%
9	Renault MASTER	274	202	240	35,64%	14,17%	4.713	3,03%	3.381	2,78%	39,40%
10	Volkswagen SAVEIRO	134	155	219	-13,55%	-38,81%	4.167	2,68%	4.045	3,32%	3,02%
11	Honda CRV	213	157	214	35,67%	-0,47%	4.116	2,65%	3.684	3,03%	11,73%
12	Citroen BERLINGO FURGON	272	93	332	192,47%	-18,07%	3.850	2,48%	2.805	2,31%	37,25%
13	Nissan FRONTIER	178	120	206	48,33%	-13,59%	3.820	2,46%	2.344	1,93%	62,97%
14	Mercedes Benz SPRINTER	133	164	260	-18,90%	-48,85%	3.289	2,11%	3.115	2,56%	5,59%
15	Toyota HILUX SW4	96	56	153	71,43%	-37,25%	2.442	1,57%	2.017	1,66%	21,07%
16	Chevrolet MONTANA	118		227	N/D	-48,02%	2.400	1,54%		0,00%	N/D
17	Chery TIGGO	138	74	182	86,49%	-24,18%	2.118	1,36%	1.886	1,55%	12,30%
18	Toyota RAV 4	64	54	128	18,52%	-50,00%	1.861	1,20%	1.569	1,29%	18,61%
19	Ford KUGA	94	55	149	70,91%	-36,91%	1.760	1,13%	973	0,80%	80,88%
20	Iveco DAILY	169	117	174	44,44%	-2,87%	1.648	1,06%	1.114	0,92%	47,94%
21	Otros	1.091	929	1.558	17,44%	-29,97%	22.714	14,60%	20.849	17,14%	8,95%
Total		7.134	6.198	10.969			155.555	1	121.673		

Comercial Pesado											
Rank.	Modelo	dic/11 (a)	dic/10 (b)	nov/11 (c)	Var a-b	Var a-c	Ac. 11	Part %	Ac. 10	Part %	Var 11-10
1	Iveco 170 E	232	191	267	21,47%	-13,11%	2.713	10,37%	1.922	10,92%	41,16%
2	Ford F-4000	94	44	107	113,64%	-12,15%	1.562	5,97%	764	4,34%	104,45%
3	Mercedes Benz BMO 368 VERSION 1618L	3	24	29	-87,50%	-89,66%	1.164	4,45%	668	3,79%	74,25%
4	Mercedes Benz BMO 384 VERSION 1418	11	29	55	-62,07%	-80,00%	817	3,12%	1.135	6,45%	-28,02%
5	Iveco 450 E	101	17	95	494,12%	6,32%	808	3,09%	420	2,39%	92,38%
6	Volkswagen 17220	33	47	52	-29,79%	-36,54%	784	3,00%	522	2,96%	50,19%
7	Scania G340	24	16	50	50,00%	-52,00%	756	2,89%	371	2,11%	103,77%
8	Ford CARGO 1722	68		130	N/D	-47,69%	755	2,89%		0,00%	N/D
9	Mercedes Benz ATEGO 1725	66	25	59	164,00%	11,86%	673	2,57%	416	2,36%	61,78%
10	Ford CARGO 1722 E	6	83	30	-92,77%	-80,00%	659	2,52%	1.144	6,50%	-42,40%
11	Scania P340	37	11	56	236,36%	-33,93%	620	2,37%	267	1,52%	132,21%
12	Mercedes Benz 1624	18	21	30	-14,29%	-40,00%	590	2,25%	274	1,56%	115,33%
13	Mercedes Benz O-500	40	32	49	25,00%	-18,37%	574	2,19%	265	1,51%	116,60%
14	Mercedes Benz LS 1634	33	23	42	43,48%	-21,43%	545	2,08%	373	2,12%	46,11%
15	Agrale MT15	5	4	40	25,00%	-87,50%	540	2,06%	277	1,57%	94,95%
16	Mercedes Benz OF 1418		14	15	-100,00%	-100,00%	532	2,03%	216	1,23%	146,30%
17	Mercedes Benz 710	25	28	41	-10,71%	-39,02%	523	2,00%	453	2,57%	15,45%
18	Renault PREMIUM	37	31	33	19,35%	12,12%	504	1,93%	257	1,46%	96,11%
19	Volkswagen 13180	32	26	32	23,08%	0,00%	477	1,82%	326	1,85%	46,32%
20	Mercedes Benz AXOR 1933	27	16	31	68,75%	-12,90%	434	1,66%	239	1,36%	81,59%
21	Otros	531	509	772	4,32%	-31,22%	10.136	38,74%	7.298	41,45%	38,89%
Total		1.423	1.191	2.015			26.166	1	17.607		

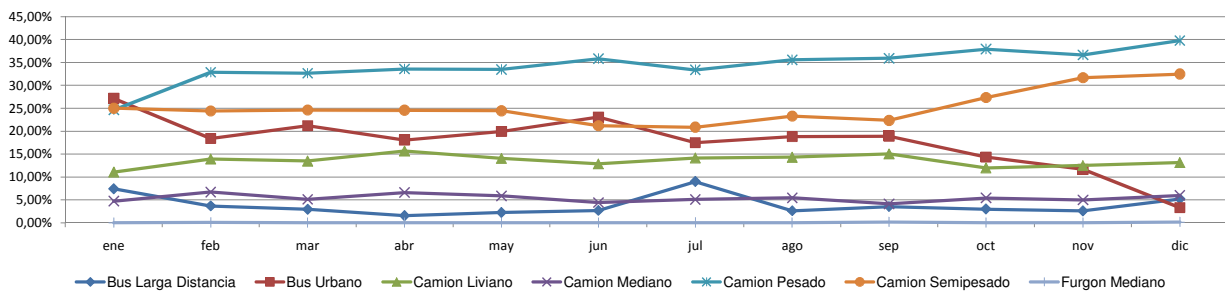


Patentamientos por Ranking de Livianos y Pesados - Mercado Total

Comercial Liviano



Comercial Pesado





Patentamientos por Provincias y Tipos -

Distrito	Automovil+Comercial Liviano							Comercial Pesado+Otros Pesados							Mercado Total					
	dic/11 (a)	dic/10 (b)	nov/11 (c)	Var a-b	Var a-c	Ac. 11	Ac. 10	Var 11-10	dic/11 (a)	dic/10 (b)	nov/11 (c)	Var a-b	Var a-c	Ac. 11	Ac. 10	Var 11-10	Ac. 11	Ac. 10	Var 11-10	Part %
GRAN BUENOS AIRES	7.294	7.376	12.015	-1,11%	-39,29%	145.920	115.028	26,86%	150	143	250	4,90%	-40,00%	3.298	2.544	29,64%	149.218	117.572	26,92%	17,39%
CAPITAL FEDERAL	7.834	8.378	10.714	-6,49%	-26,88%	133.135	115.115	15,65%	563	580	811	-2,93%	-30,58%	10.607	7.795	36,07%	143.742	122.910	16,95%	16,75%
BUENOS AIRES	5.309	5.245	9.405	1,22%	-43,55%	128.335	97.465	31,67%	261	211	421	23,70%	-38,00%	4.625	3.193	44,85%	132.960	100.658	32,09%	15,50%
CORDOBA	2.966	3.389	6.087	-12,48%	-51,27%	80.859	63.724	26,89%	144	135	234	6,67%	-38,46%	2.930	1.977	48,20%	83.789	65.701	27,53%	9,77%
SANTA FE	2.654	2.874	5.054	-7,65%	-47,49%	70.104	52.309	34,02%	191	180	296	6,11%	-35,47%	3.403	2.387	42,56%	73.507	54.696	34,39%	8,57%
MENDOZA	1.189	984	2.301	20,83%	-48,33%	31.277	23.605	32,50%	62	33	119	87,88%	-47,90%	1.501	1.104	35,96%	32.778	24.709	32,66%	3,82%
ENTRE RIOS	786	875	1.605	-10,17%	-51,03%	22.457	16.265	38,07%	71	62	112	14,52%	-36,61%	1.435	1.006	42,64%	23.892	17.271	38,34%	2,78%
TUCUMAN	881	604	1.623	45,86%	-45,72%	19.832	13.747	44,26%	56	73	112	-23,29%	-50,00%	1.251	753	66,14%	21.083	14.500	45,40%	2,46%
CORRIENTES	703	621	1.195	13,20%	-41,17%	18.825	12.994	44,87%	115	52	161	121,15%	-28,57%	1.750	1.077	62,49%	20.575	14.071	46,22%	2,40%
SALTA	764	707	1.319	8,06%	-42,08%	16.742	12.444	34,54%	43	62	66	-30,65%	-34,85%	1.120	878	27,56%	17.862	13.322	34,08%	2,08%
NEUQUEN	777	620	1.310	25,32%	-40,69%	16.060	11.802	36,08%	40	42	85	-4,76%	-52,94%	727	433	67,90%	16.787	12.235	37,20%	1,96%
CHUBUT	757	635	1.170	19,21%	-35,30%	16.124	13.033	23,72%	26	38	44	-31,58%	-40,91%	586	448	30,80%	16.710	13.481	23,95%	1,95%
CHACO	573	463	968	23,76%	-40,81%	13.594	9.187	47,97%	37	41	59	-9,76%	-37,29%	753	456	65,13%	14.347	9.643	48,78%	1,67%
RIO NEGRO	484	519	933	-6,74%	-48,12%	12.128	9.337	29,89%	14	14	20	0,00%	-30,00%	315	200	57,50%	12.443	9.537	30,47%	1,45%
SANTA CRUZ	628	629	949	-0,16%	-33,83%	11.834	10.033	17,95%	28	29	49	-3,45%	-42,86%	509	362	40,61%	12.343	10.395	18,74%	1,44%
MISIONES	348	334	769	4,19%	-54,75%	11.385	8.092	40,69%	31	23	31	34,78%	0,00%	531	333	59,46%	11.916	8.425	41,44%	1,39%
TIERRA DEL FUEGO	570	600	877	-5,00%	-35,01%	10.060	6.910	45,59%	40	15	59	166,67%	-32,20%	501	260	92,69%	10.561	7.170	47,29%	1,23%
JUJUY	370	418	699	-11,48%	-47,07%	9.464	7.424	27,48%	76	53	48	43,40%	58,33%	1.018	804	26,62%	10.482	8.228	27,39%	1,22%
SAN JUAN	263	222	671	18,47%	-60,80%	8.625	6.418	34,39%	38	16	34	137,50%	11,76%	527	361	45,98%	9.152	6.779	35,01%	1,07%
LA PAMPA	396	329	648	20,36%	-38,89%	8.887	6.291	41,27%	18	12	14	50,00%	28,57%	232	172	34,88%	9.119	6.463	41,10%	1,06%
SANTIAGO DEL ESTERO	196	164	523	19,51%	-62,52%	8.175	5.756	42,03%	23	12	19	91,67%	21,05%	388	221	75,57%	8.563	5.977	43,27%	1,00%
FORMOSA	305	246	492	23,98%	-38,01%	7.490	5.598	33,80%	18	10	20	80,00%	-10,00%	279	219	27,40%	7.769	5.817	33,56%	0,91%
SAN LUIS	267	343	593	-22,16%	-54,97%	7.461	5.396	38,27%	9	5	15	80,00%	-40,00%	136	100	36,00%	7.597	5.496	38,23%	0,89%
CATAMARCA	184	187	402	-1,60%	-54,23%	5.697	3.778	50,79%	2	4	12	-50,00%	-83,33%	111	72	54,17%	5.808	3.850	50,86%	0,68%
LA RIOJA	179	151	339	18,54%	-47,20%	4.873	3.745	30,12%	6	4	8	50,00%	-25,00%	107	90	18,89%	4.980	3.835	29,86%	0,58%



Patentamientos por Provincias y Tipos -

