



Patentamientos por Marcas - Mercado Total

	oct/11(a)	sep/11(b)	oct/10(c)	oct/09(d)	Var a-b	Var a-c	Var a-d	Ac. 11	Ac. 10	Var 11-10
Automovil	55.829	65.705	41.609	31.110	-15,03%	34,18%	79,46%	582.296	441.355	31,93%
Comercial Liviano	12.912	14.864	9.809	7.086	-13,13%	31,63%	82,22%	137.410	105.820	29,85%
Comercial Pesado	2.266	2.550	1.575	1.156	-11,14%	43,87%	96,02%	22.702	14.686	54,58%
Otros Pesados	1.061	1.192	835	610	-10,99%	27,07%	73,93%	10.742	8.076	33,01%
Total	72.068	84.311	53.828	39.962	-14,52%	33,89%	80,34%	753.150	569.937	32,15%
Prom. diario	3.603	3.832	2.833	1.903				3.656	2.780	
Dias habiles	20	22	19	21				206	205	

Patentamientos por origen	
	11-Oct Ac. 11
Importados	43.743 472.891
Nacionales	28.325 280.259



■ Importados ■ Nacionales

Patentamientos Mensuales

	ene	feb	mar	abr	may	jun	jul	ago	sep	oct	nov	dic
2011	104.105	60.178	67.605	65.373	67.986	78.517	73.038	79.969	84.311	72.068		
2010	78.466	44.759	57.287	50.946	50.819	54.810	57.571	57.401	64.050	53.828	54.042	38.762
Var% 11-10	32,68%	34,45%	18,01%	28,32%	33,78%	43,25%	26,87%	39,32%	31,63%	33,89%	-100,00%	-100,00%
2009	73.927	39.075	41.300	40.533	40.147	44.100	46.630	42.434	46.020	39.962	37.493	23.282
2008	85.808	46.476	44.277	56.148	56.809	49.081	58.414	51.110	56.196	51.035	35.527	19.890

Patentamientos por Marcas - Totales

Marca	oct/11(a)	Part %	oct/10(c)	Part %	sep/11(e)	Part %	Var a-c	Var a-e	ene - oct	Part %	ene - oct	Part %	2010	Var
Volkswagen	14.936	21,00%	10.441	19,67%	15.616	18,76%	43,05%	-4,35%	150.712	20,27%	107.385	19,09%	19,09%	40,35%
Chevrolet	12.225	17,19%	8.625	16,25%	15.179	18,23%	41,74%	-19,46%	118.579	15,95%	87.479	15,55%	15,55%	35,55%
Ford	8.880	12,49%	6.273	11,82%	10.855	13,04%	41,56%	-18,19%	96.045	12,92%	69.655	12,38%	12,38%	37,89%
Renault	8.924	12,55%	5.943	11,20%	11.963	14,37%	50,16%	-25,40%	89.724	12,07%	69.207	12,30%	12,30%	29,65%
Fiat	8.060	11,33%	4.857	9,15%	9.051	10,87%	65,95%	-10,95%	77.788	10,46%	57.685	10,25%	10,25%	34,85%
Peugeot	6.160	8,66%	4.995	9,41%	6.947	8,34%	23,32%	-11,33%	65.660	8,83%	48.695	8,65%	8,65%	34,84%
Toyota	3.111	4,38%	2.454	4,62%	3.314	3,98%	26,77%	-6,13%	32.990	4,44%	27.897	4,96%	4,96%	18,26%
Citroen	2.944	4,14%	2.143	4,04%	3.008	3,61%	37,38%	-2,13%	28.537	3,84%	20.810	3,70%	3,70%	37,13%
Honda	808	1,14%	1.755	3,31%	904	1,09%	-53,96%	-10,62%	15.939	2,14%	18.298	3,25%	3,25%	-12,89%
Mercedes Benz	1.152	1,62%	944	1,78%	1.562	1,88%	22,03%	-26,25%	13.905	1,87%	10.712	1,90%	1,90%	29,81%
Nissan	931	1,31%	930	1,75%	1.242	1,49%	0,11%	-25,04%	12.691	1,71%	8.383	1,49%	1,49%	51,39%
Hyundai	281	0,40%	625	1,18%	361	0,43%	-55,04%	-22,16%	5.311	0,71%	4.809	0,85%	0,85%	10,44%
Iveco	558	0,78%	403	0,76%	569	0,68%	38,46%	-1,93%	5.055	0,68%	3.224	0,57%	0,57%	56,79%
Audi	415	0,58%	263	0,50%	543	0,65%	57,79%	-23,57%	4.773	0,64%	3.634	0,65%	0,65%	31,34%
Chery	465	0,65%	304	0,57%	421	0,51%	52,96%	10,45%	3.903	0,52%	1.978	0,35%	0,35%	97,32%
Dodge	100	0,14%	166	0,31%	310	0,37%	-39,76%	-67,74%	3.611	0,49%	2.459	0,44%	0,44%	46,85%
Suzuki	8	0,01%	494	0,93%	11	0,01%	-98,38%	-27,27%	2.799	0,38%	6.344	1,13%	1,13%	-55,88%
Kia	179	0,25%	284	0,54%	231	0,28%	-36,97%	-22,51%	2.534	0,34%	2.523	0,45%	0,45%	0,44%
Scania	208	0,29%	146	0,28%	255	0,31%	42,47%	-18,43%	2.353	0,32%	1.207	0,21%	0,21%	94,95%
BMW	18	0,03%	270	0,51%	14	0,02%	-93,33%	28,57%	1.613	0,22%	3.133	0,56%	0,56%	-48,52%
Jeep	194	0,27%	103	0,19%	162	0,19%	88,35%	19,75%	1.277	0,17%	883	0,16%	0,16%	44,62%
Agrale	84	0,12%	66	0,12%	107	0,13%	27,27%	-21,50%	1.175	0,16%	748	0,13%	0,13%	57,09%
Volvo	122	0,17%	58	0,11%	136	0,16%	110,34%	-10,29%	1.086	0,15%	544	0,10%	0,10%	99,63%
Mitsubishi	69	0,10%	85	0,16%	76	0,09%	-18,82%	-9,21%	965	0,13%	1.008	0,18%	0,18%	-4,27%
Randon	77	0,11%	66	0,12%	101	0,12%	16,67%	-23,76%	783	0,11%	568	0,10%	0,10%	37,85%
Chrysler	1	0,00%	120	0,23%	10	0,01%	-99,17%	-90,00%	733	0,10%	872	0,15%	0,15%	-15,94%
Subaru	33	0,05%	50	0,09%	37	0,04%	-34,00%	-10,81%	503	0,07%	567	0,10%	0,10%	-11,29%
Alfa Romeo	32	0,05%	42	0,08%	39	0,05%	-23,81%	-17,95%	407	0,05%	244	0,04%	0,04%	66,80%
Seat	1	0,00%	64	0,12%	5	0,01%	-98,44%	-80,00%	383	0,05%	553	0,10%	0,10%	-30,74%
Smart	29	0,04%		0,00%	42	0,05%	N/D	-30,95%	375	0,05%	1	0,00%	0,00%	37400,00%
Puma de Tat	10	0,01%	30	0,06%	58	0,07%	-66,67%	-82,76%	332	0,04%	265	0,05%	0,05%	25,28%
MONTENEGRO	23	0,03%	13	0,02%	30	0,04%	76,92%	-23,33%	292	0,04%	181	0,03%	0,03%	61,33%
Mini	11	0,02%	35	0,07%	5	0,01%	-68,57%	120,00%	253	0,03%	436	0,08%	0,08%	-41,97%
DFM	23	0,03%	12	0,02%	22	0,03%	91,67%	4,55%	142	0,02%	32	0,01%	0,01%	343,75%
Porsche	10	0,01%	4	0,01%	42	0,05%	150,00%	-76,19%	124	0,02%	87	0,02%	0,02%	42,53%
Land Rover	10	0,01%	8	0,02%	8	0,01%	25,00%	25,00%	79	0,01%	72	0,01%	0,01%	9,72%
Montesur	5	0,01%	7	0,01%	2	0,00%	-28,57%	150,00%	41	0,01%	53	0,01%	0,01%	-22,64%
Mack	7	0,01%		0,00%	5	0,01%	N/D	40,00%	14	0,00%	7	0,00%	0,00%	100,00%
Ssangyong	4	0,01%		0,00%	7	0,01%	N/D	-42,86%	14	0,00%		0,00%	0,00%	N/D
Materfer		0,00%	1	0,00%		0,00%	-100,00%	N/D	10	0,00%	11	0,00%	0,00%	-9,09%
Jaguar		0,00%		0,00%	2	0,00%	N/D	-100,00%	9	0,00%	8	0,00%	0,00%	12,50%
Ferrari		0,00%		0,00%		0,00%	N/D	N/D	1	0,00%	5	0,00%	0,00%	-80,00%
Maserati		0,00%		0,00%		0,00%	N/D	N/D		0,00%	1	0,00%	0,00%	-100,00%
Total	71.108		53.079		83.252				743.520		562.663			

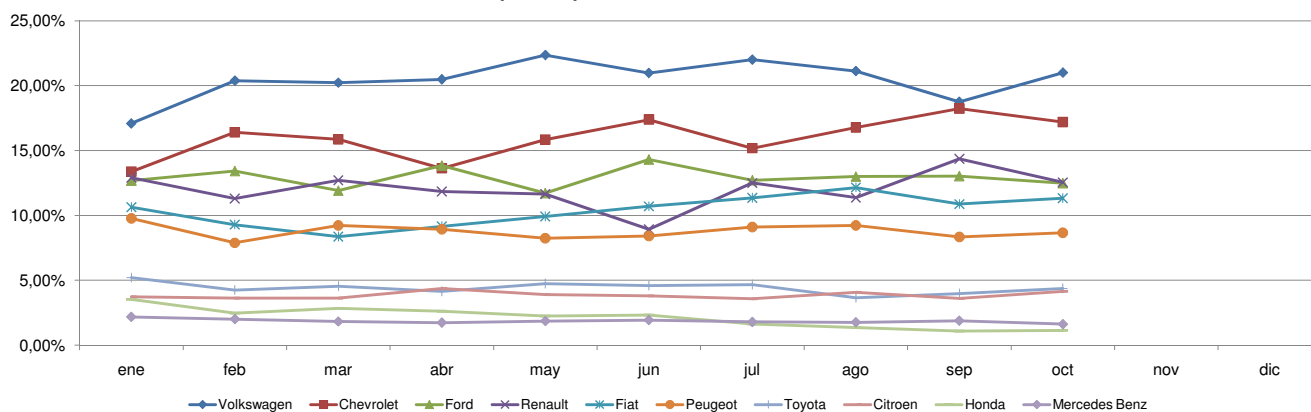


Patentamientos por Marcas - Mercado Total

Patentamientos por Marcas - Autos + Livianos								2011	2011	2010	2010	Var	
Marca	oct/11(a)	Part %	oct/10(c)	Part %	sep/11(e)	Part %	Var a-c	Var a-e	ene - oct	Part %	ene - oct	Part %	2011-2010
Volkswagen	14.769	21,48%	10.273	19,98%	15.448	19,17%	43,77%	-4,40%	148.698	20,66%	106.011	19,37%	40,27%
Chevrolet	12.225	17,78%	8.625	16,77%	15.179	18,84%	41,74%	-19,46%	118.579	16,48%	87.479	15,99%	35,55%
Ford	8.424	12,25%	5.993	11,66%	10.383	12,89%	40,56%	-18,87%	92.410	12,84%	66.967	12,24%	37,99%
Renault	8.866	12,90%	5.906	11,49%	11.884	14,75%	50,12%	-25,40%	89.161	12,39%	68.920	12,60%	29,37%
Fiat	8.060	11,73%	4.857	9,45%	9.051	11,23%	65,95%	-10,95%	77.788	10,81%	57.685	10,54%	34,85%
Peugeot	6.160	8,96%	4.995	9,71%	6.947	8,62%	23,32%	-11,33%	65.660	9,12%	48.695	8,90%	34,84%
Toyota	3.111	4,53%	2.454	4,77%	3.314	4,11%	26,77%	-6,13%	32.990	4,58%	27.897	5,10%	18,26%
Citroen	2.944	4,28%	2.143	4,17%	3.008	3,73%	37,38%	-2,13%	28.537	3,97%	20.810	3,80%	37,13%
Honda	808	1,18%	1.755	3,41%	904	1,12%	-53,96%	-10,62%	15.939	2,21%	18.298	3,34%	-12,89%
Nissan	931	1,35%	930	1,81%	1.242	1,54%	0,11%	-25,04%	12.691	1,76%	8.383	1,53%	51,39%
Mercedes Benz	438	0,64%	464	0,90%	689	0,86%	-5,60%	-36,43%	6.322	0,88%	5.562	1,02%	13,66%
Hyundai	274	0,40%	593	1,15%	350	0,43%	-53,79%	-21,71%	5.029	0,70%	4.560	0,83%	10,29%
Audi	415	0,60%	263	0,51%	543	0,67%	57,79%	-23,57%	4.773	0,66%	3.634	0,66%	31,34%
Chery	465	0,68%	304	0,59%	421	0,52%	52,96%	10,45%	3.903	0,54%	1.978	0,36%	97,32%
Dodge	100	0,15%	166	0,32%	310	0,38%	-39,76%	-67,74%	3.611	0,50%	2.459	0,45%	46,85%
Suzuki	8	0,01%	494	0,96%	11	0,01%	-98,38%	-27,27%	2.799	0,39%	6.344	1,16%	-55,88%
Kia	179	0,26%	284	0,55%	231	0,29%	-36,97%	-22,51%	2.534	0,35%	2.523	0,46%	0,44%
BMW	18	0,03%	270	0,53%	14	0,02%	-93,33%	28,57%	1.613	0,22%	3.133	0,57%	-48,52%
Iveco	135	0,20%	122	0,24%	180	0,22%	10,66%	-25,00%	1.306	0,18%	880	0,16%	48,41%
Jeep	194	0,28%	103	0,20%	162	0,20%	88,35%	19,75%	1.277	0,18%	883	0,16%	44,62%
Mitsubishi	69	0,10%	85	0,17%	76	0,09%	-18,82%	-9,21%	965	0,13%	1.008	0,18%	-4,27%
Chrysler	1	0,00%	120	0,23%	10	0,01%	-99,17%	-90,00%	733	0,10%	872	0,16%	-15,94%
Subaru	33	0,05%	50	0,10%	37	0,05%	-34,00%	-10,81%	503	0,07%	567	0,10%	-11,29%
Alfa Romeo	32	0,05%	42	0,08%	39	0,05%	-23,81%	-17,95%	407	0,06%	244	0,04%	66,80%
Seat	1	0,00%	64	0,12%	5	0,01%	-98,44%	-80,00%	383	0,05%	553	0,10%	-30,74%
Smart	29	0,04%		0,00%	42	0,05%	N/D	-30,95%	375	0,05%	1	0,00%	37400,00%
Mini	11	0,02%	35	0,07%	5	0,01%	-68,57%	120,00%	253	0,04%	436	0,08%	-41,97%
Volvo	17	0,02%	16	0,03%	25	0,03%	6,25%	-32,00%	240	0,03%	220	0,04%	9,09%
Porsche	10	0,01%	4	0,01%	42	0,05%	150,00%	-76,19%	124	0,02%	87	0,02%	42,53%
Land Rover	10	0,01%	8	0,02%	8	0,01%	25,00%	25,00%	79	0,01%	72	0,01%	9,72%
Ssangyong	4	0,01%		0,00%	7	0,01%	N/D	-42,86%	14	0,00%		0,00%	N/D
Jaguar		0,00%		0,00%	2	0,00%	N/D	-100,00%	9	0,00%	8	0,00%	12,50%
Ferrari		0,00%		0,00%		0,00%	N/D	N/D	1	0,00%	5	0,00%	-80,00%
Maserati		0,00%		0,00%		0,00%	N/D	N/D		0,00%	1	0,00%	-100,00%
Total	68.741		51.418		80.569				719.706		547.175		

Patentamientos por Marcas - Camiones + Buses								2011	2011	2010	2010	Var	
Marca	oct/11(a)	Part %	oct/10(c)	Part %	sep/11(e)	Part %	Var a-c	Var a-e	ene - oct	Part %	ene - oct	Part %	2011-2010
Mercedes Benz	714	30,16%	480	28,90%	873	32,54%	48,75%	-18,21%	7.583	31,84%	5.150	33,25%	47,24%
Iveco	423	17,87%	281	16,92%	389	14,50%	50,53%	8,74%	3.749	15,74%	2.344	15,13%	59,94%
Ford	456	19,26%	280	16,86%	472	17,59%	62,86%	-3,39%	3.635	15,26%	2.688	17,36%	35,23%
Scania	208	8,79%	146	8,79%	255	9,50%	42,47%	-18,43%	2.353	9,88%	1.207	7,79%	94,95%
Volkswagen	167	7,06%	168	10,11%	168	6,26%	-0,60%	-0,60%	2.014	8,46%	1.374	8,87%	46,58%
Agrale	84	3,55%	66	3,97%	107	3,99%	27,27%	-21,50%	1.175	4,93%	748	4,83%	57,09%
Volvo	105	4,44%	42	2,53%	111	4,14%	150,00%	-5,41%	846	3,55%	324	2,09%	161,11%
Randon	77	3,25%	66	3,97%	101	3,76%	16,67%	-23,76%	783	3,29%	568	3,67%	37,85%
Renault	58	2,45%	37	2,23%	79	2,94%	56,76%	-26,58%	563	2,36%	287	1,85%	96,17%
Puma de Tat	10	0,42%	30	1,81%	58	2,16%	-66,67%	-82,76%	332	1,39%	265	1,71%	25,28%
MONTENEGRO	23	0,97%	13	0,78%	30	1,12%	76,92%	-23,33%	292	1,23%	181	1,17%	61,33%
Hyundai	7	0,30%	32	1,93%	11	0,41%	-78,13%	-36,36%	282	1,18%	249	1,61%	13,25%
DFM	23	0,97%	12	0,72%	22	0,82%	91,67%	4,55%	142	0,60%	32	0,21%	343,75%
Montesur	5	0,21%	7	0,42%	2	0,07%	-28,57%	150,00%	41	0,17%	53	0,34%	-22,64%
Mack	7	0,30%		0,00%	5	0,19%	N/D	40,00%	14	0,06%	7	0,05%	100,00%
Materfer		0,00%	1	0,06%		0,00%	-100,00%	N/D	10	0,04%	11	0,07%	-9,09%
Total	2.367		1.661		2.683				23.814		15.488		

Participacion por Marcas - Evolucion Mensual

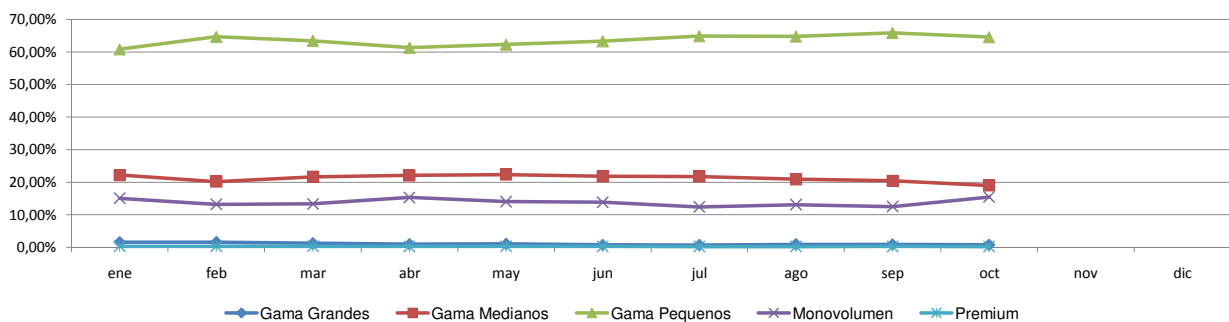




Patentamientos por Ranking de Automoviles - Mercado Total

Rank.	Modelo	Ranking Por Modelos - Automoviles									
		oct/11 (a)	oct/10 (b)	sep/11 (c)	Var a-b	Var a-c	Ac. 11	Part %	Ac. 10	Part %	Var 11-10
1	Volkswagen GOL	5.982	3.440	5.799	73,90%	3,16%	54.660	9,39%	40.455	9,17%	35,11%
2	Chevrolet CLASSIC	4.170	3.288	4.766	26,82%	-12,51%	40.939	7,03%	17.538	3,97%	133,43%
3	Peugeot 207	3.187	2.453	3.356	29,92%	-5,04%	31.510	5,41%	27.165	6,15%	15,99%
4	Renault SANDERO	2.106	1.929	3.687	9,18%	-42,88%	25.534	4,39%	19.751	4,48%	29,28%
5	Ford ECOSPORT	2.405	1.734	2.517	38,70%	-4,45%	24.881	4,27%	18.125	4,11%	37,27%
6	Volkswagen SURAN	2.413	1.575	2.239	53,21%	7,77%	20.674	3,55%	18.584	4,21%	11,25%
7	Volkswagen BORA	959	834	1.757	14,99%	-45,42%	18.640	3,20%	10.426	2,36%	78,78%
8	Chevrolet AVEO	1.678	1.378	2.166	21,77%	-22,53%	17.064	2,93%	10.982	2,49%	55,38%
9	Chevrolet AGILE	1.610	1.178	2.013	36,67%	-20,02%	15.918	2,73%	11.131	2,52%	43,01%
10	Ford FOCUS II	1.755	942	1.675	86,31%	4,78%	15.165	2,60%	9.401	2,13%	61,31%
11	Renault CLIO	1.405	1.180	1.858	19,07%	-24,38%	15.096	2,59%	12.365	2,80%	22,09%
12	Fiat SIENA	1.563	1.009	1.642	54,91%	-4,81%	14.353	2,46%	11.720	2,66%	22,47%
13	Ford KA	1.457	978	1.741	48,98%	-16,31%	14.164	2,43%	12.163	2,76%	16,45%
14	Fiat PALIO	1.278	1.308	1.568	-2,29%	-18,49%	13.954	2,40%	14.509	3,29%	-3,83%
15	Volkswagen VOYAGE	1.153	932	1.285	23,71%	-10,27%	13.656	2,35%	10.071	2,28%	35,60%
16	Fiat UNO 2010	1.404	259	1.453	442,08%	-3,37%	12.884	2,21%	259	0,06%	4874,52%
17	Volkswagen FOX	1.314	1.336	951	-1,65%	38,17%	11.677	2,01%	9.303	2,11%	25,52%
18	Ford FIESTA KINETIC	392	5	1.742	7740,00%	-77,50%	10.516	1,81%	5	0,00%	210220,00%
19	Chevrolet CELTA	1.898		2.472	N/D	-23,22%	10.031	1,72%		0,00%	N/D
20	Toyota COROLLA	867	731	1.019	18,60%	-14,92%	9.525	1,64%	7.857	1,78%	21,23%
21	Renault LOGAN	795	608	1.241	30,76%	-35,94%	9.469	1,63%	6.649	1,51%	42,41%
22	Volkswagen VENTO	1.095	674	1.511	62,46%	-27,53%	9.261	1,59%	5.184	1,17%	78,65%
23	Ford FIESTA	507	902	735	-43,79%	-31,02%	8.996	1,54%	9.969	2,26%	-9,76%
24	Citroen C3	786	425	847	84,94%	-7,20%	8.940	1,54%	4.863	1,10%	83,84%
25	Renault FLUENCE	842	24	1.336	3408,33%	-36,98%	8.163	1,40%	24	0,01%	33912,50%
26	Citroen C4	732	897	734	-18,39%	-0,27%	8.006	1,37%	7.826	1,77%	2,30%
27	Fiat UNO	827	504	1.048	64,09%	-21,09%	7.852	1,35%	8.060	1,83%	-2,58%
28	Chevrolet MERIVA	646	409	1.011	57,95%	-36,10%	7.805	1,34%	5.996	1,36%	30,17%
29	Fiat PUNTO	781	394	829	98,22%	-5,79%	7.681	1,32%	8.009	1,81%	-4,10%
30	Nissan TIIDA	369	578	607	-36,16%	-39,21%	6.439	1,11%	5.642	1,28%	14,13%
31	Peugeot 307	393	822	463	-52,19%	-15,12%	6.416	1,10%	7.264	1,65%	-11,67%
32	Renault SYMBOL	449	471	756	-4,67%	-40,61%	6.416	1,10%	6.709	1,52%	-4,37%
33	Honda FIT	363	837	440	-56,63%	-17,50%	6.299	1,08%	8.119	1,84%	-22,42%
34	Peugeot 206	473	500	571	-5,40%	-17,16%	6.176	1,06%	4.697	1,06%	31,49%
35	Peugeot 408	778		812	N/D	-4,19%	5.907	1,01%		0,00%	N/D
36	Chevrolet ASTRA	408	465	486	-12,26%	-16,05%	5.303	0,91%	5.198	1,18%	2,02%
37	Renault KANGOO	465	448	637	3,79%	-27,00%	5.166	0,89%	5.367	1,22%	-3,75%
38	Peugeot PARTNER	413	362	492	14,09%	-16,06%	4.560	0,78%	2.399	0,54%	90,08%
39	Fiat IDEA	429	161	388	166,46%	10,57%	4.097	0,70%	2.083	0,47%	96,69%
40	Honda CITY	101	403	139	-74,94%	-27,34%	3.937	0,68%	4.798	1,09%	-17,94%
41	Dodge JOURNEY	100	147	310	-31,97%	-67,74%	3.571	0,61%	1.914	0,43%	86,57%
42	Chevrolet CRUZE	247	215	389	14,88%	-36,50%	3.514	0,60%	222	0,05%	1482,88%
43	Citroen PICASSO	257	322	217	-20,19%	18,43%	2.660	0,46%	2.940	0,67%	-9,52%
44	Citroen BERLINGO	233	230	257	1,30%	-9,34%	2.583	0,44%	1.935	0,44%	33,49%
45	Nissan SENTRA	242	24	255	908,33%	-5,10%	2.314	0,40%	24	0,01%	9541,67%
46	Suzuki FUN	7	446	9	-98,43%	-22,22%	2.212	0,38%	5.524	1,25%	-59,96%
47	Chevrolet CORSA	11	603	22	-98,18%	-50,00%	1.852	0,32%	21.637	4,90%	-91,44%
48	Chevrolet VECTRA	70	229	95	-69,43%	-26,32%	1.824	0,31%	3.039	0,69%	-39,98%
49	Honda CIVIC	100	150	93	-33,33%	7,53%	1.691	0,29%	1.921	0,44%	-11,97%
50	Citroen C3 PICASSO	384		371	N/D	3,50%	1.663	0,29%		0,00%	N/D
51	Otros	3.530	2.870	2.898	23,00%	21,81%	30.682	5,27%	31.533	7,14%	-2,70%
Total		55.829	41.609	65.705			582.296	1	441.355		

Autos - Participacion por Segmento





Patentamientos por Ranking de Livianos y Pesados - Mercado Total

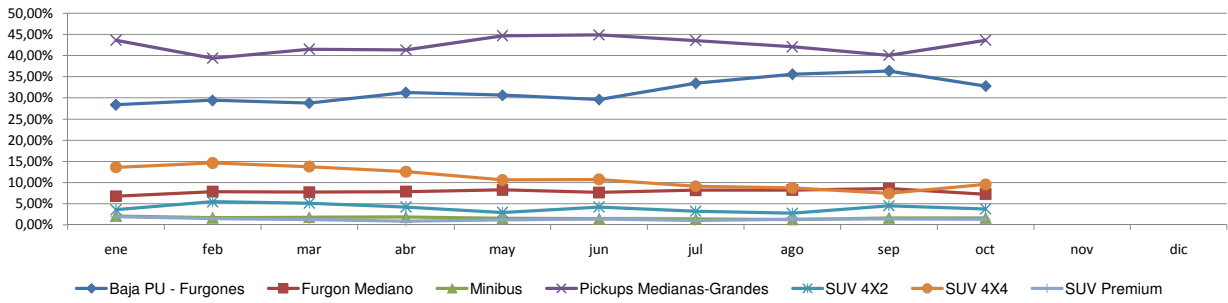
Rank.	Comercial Liviano										
	Modelo	oct/11 (a)	oct/10 (b)	sep/11 (c)	Var a-b	Var a-c	Ac. 11	Part %	Ac. 10	Part %	Var 11-10
1	Toyota HILUX	1.812	1.360	1.919	33,24%	-5,58%	18.930	13,78%	16.331	15,43%	15,91%
2	Volkswagen AMAROK	1.314	1.116	1.234	17,74%	6,48%	13.098	9,53%	5.549	5,24%	136,04%
3	Ford RANGER	1.416	843	1.416	67,97%	0,00%	12.793	9,31%	11.059	10,45%	15,68%
4	Renault KANGOO FURGON	981	515	1.462	90,49%	-32,90%	10.929	7,95%	8.323	7,87%	31,31%
5	Peugeot PARTNER FURGON	680	638	912	6,58%	-25,44%	8.233	5,99%	5.659	5,35%	45,49%
6	Chevrolet S-10	611	475	830	28,63%	-26,39%	8.044	5,85%	7.374	6,97%	9,09%
7	Fiat FIORINO	898	526	899	70,72%	-0,11%	7.440	5,41%	6.718	6,35%	10,75%
8	Fiat STRADA	609	424	861	43,63%	-29,27%	6.061	4,41%	2.802	2,65%	116,31%
9	Renault MASTER	365	290	540	25,86%	-32,41%	4.203	3,06%	2.898	2,74%	45,03%
10	Volkswagen SAVEIRO	247	148	308	66,89%	-19,81%	3.813	2,77%	3.696	3,49%	3,17%
11	Honda CRV	236	345	219	-31,59%	7,76%	3.689	2,68%	3.125	2,95%	18,05%
12	Nissan FRONTIER	317	259	374	22,39%	-15,24%	3.436	2,50%	1.949	1,84%	76,30%
13	Citroen BERLINGO FURGON	379	178	431	112,92%	-12,06%	3.246	2,36%	2.588	2,45%	25,43%
14	Mercedes Benz SPRINTER	236	242	339	-2,48%	-30,38%	2.894	2,11%	2.688	2,54%	7,66%
15	Toyota HILUX SW4	204	160	228	27,50%	-10,53%	2.193	1,60%	1.856	1,75%	18,16%
16	Chevrolet MONTANA	279		294	N/D	-5,10%	2.051	1,49%		0,00%	N/D
17	Chery TIGGO	172	154	232	11,69%	-25,86%	1.798	1,31%	1.653	1,56%	8,77%
18	Toyota RAV 4	175	141	113	24,11%	54,87%	1.669	1,21%	1.413	1,34%	18,12%
19	Ford KUGA	113	121	149	-6,61%	-24,16%	1.516	1,10%	835	0,79%	81,56%
20	Ford F 100	107	193	128	-44,56%	-16,41%	1.432	1,04%	1.752	1,66%	-18,26%
21	Otros	1.761	1.681	1.976	4,76%	-10,88%	19.942	14,51%	17.552	16,59%	13,62%
Total		12.912	9.809	14.864			137.410	1	105.820		

Rank.	Comercial Pesado										
	Modelo	oct/11 (a)	oct/10 (b)	sep/11 (c)	Var a-b	Var a-c	Ac. 11	Part %	Ac. 10	Part %	Var 11-10
1	Iveco 170 E	206	211	193	-2,37%	6,74%	2.211	9,74%	1.487	10,13%	48,69%
2	Ford F-4000	146	76	190	92,11%	-23,16%	1.360	5,99%	651	4,43%	108,91%
3	Mercedes Benz BMO 368	44	72	103	-38,89%	-57,28%	1.211	5,34%	617	4,20%	96,27%
4	Mercedes Benz BMO 384	99	84	137	17,86%	-27,74%	751	3,31%	1.052	7,16%	-28,61%
5	Volkswagen 17220	56	49	57	14,29%	-1,75%	698	3,08%	404	2,75%	72,77%
6	Scania G340	61	30	95	103,33%	-35,79%	681	3,00%	318	2,17%	114,15%
7	Ford CARGO 1722 E	13	74	17	-82,43%	-23,53%	623	2,74%	942	6,41%	-33,86%
8	Iveco 450 E	113	39	100	189,74%	13,00%	610	2,69%	362	2,46%	68,51%
9	Ford CARGO 1722	181		133	N/D	36,09%	556	2,45%		0,00%	N/D
10	Mercedes Benz ATEGO 1725	45	28	41	60,71%	9,76%	548	2,41%	355	2,42%	54,37%
11	Mercedes Benz 1624	46	24	64	91,67%	-28,13%	541	2,38%	207	1,41%	161,35%
12	Scania P340	62	47	51	31,91%	21,57%	527	2,32%	235	1,60%	124,26%
13	Mercedes Benz OF 1418	17	11	22	54,55%	-22,73%	517	2,28%	196	1,33%	163,78%
14	Agrale MT15	40	17	37	135,29%	8,11%	495	2,18%	209	1,42%	136,84%
15	Mercedes Benz O-500	58	28	48	107,14%	20,83%	485	2,14%	197	1,34%	146,19%
16	Mercedes Benz LS 1634	43	34	39	26,47%	10,26%	470	2,07%	306	2,08%	53,59%
17	Mercedes Benz 710	43	41	64	4,88%	-32,81%	457	2,01%	382	2,60%	19,63%
18	Renault PREMIUM	45	27	57	66,67%	-21,05%	434	1,91%	179	1,22%	142,46%
19	Volkswagen 13180	48	31	31	54,84%	54,84%	413	1,82%	265	1,80%	55,85%
20	Iveco 490 S	36	13	34	176,92%	5,88%	379	1,67%	200	1,36%	89,50%
21	Otros	860	639	1.037	34,59%	-17,07%	8.731	38,47%	6.122	41,69%	42,62%
Total		2.262	1.575	2.550			22.698	1	14.686		

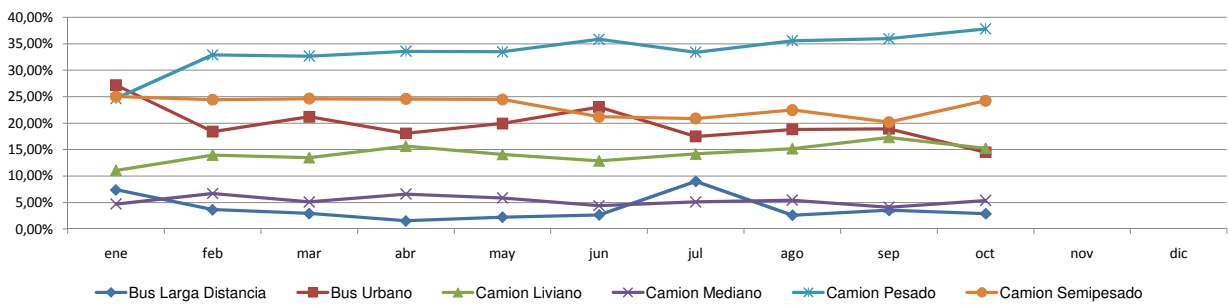


Patentamientos por Ranking de Livianos y Pesados - Mercado Total

Comercial Liviano



Comercial Pesado





Patentamientos por Provincias y Tipos -

Distrito	Automovil+Comercial Liviano							Comercial Pesado+Otros Pesados							Mercado Total					
	oct/11 (a)	oct/10 (b)	sep/11 (c)	Var a-b	Var a-c	Ac. 11	Ac. 10	Var 11-10	oct/11 (a)	oct/10 (b)	sep/11 (c)	Var a-b	Var a-c	Ac. 11	Ac. 10	Var 11-10	Ac. 11	Ac. 10	Var 11-10	Part %
GRAN BUENOS AIRES	12.172	9.484	14.208	28,34%	-14,33%	126.583	97.764	29,48%	285	232	266	22,84%	7,14%	2.897	2.201	31,62%	129.480	99.965	29,53%	17,19%
CAPITAL FEDERAL	11.323	9.554	13.306	18,52%	-14,90%	114.529	96.782	18,34%	855	730	1.109	17,12%	-22,90%	9.227	6.484	42,30%	123.756	103.266	19,84%	16,43%
BUENOS AIRES	10.494	8.108	12.601	29,43%	-16,72%	113.587	84.592	34,28%	433	279	509	55,20%	-14,93%	3.941	2.650	48,72%	117.528	87.242	34,71%	15,60%
CORDOBA	6.982	4.898	7.705	42,55%	-9,38%	71.751	55.545	29,18%	282	179	247	57,54%	14,17%	2.538	1.651	53,73%	74.289	57.196	29,88%	9,86%
SANTA FE	5.840	4.419	6.947	32,16%	-15,93%	62.394	45.335	37,63%	319	209	323	52,63%	-1,24%	2.917	1.937	50,59%	65.311	47.272	38,16%	8,67%
MENDOZA	2.681	1.877	3.159	42,83%	-15,13%	27.783	20.924	32,78%	138	90	172	53,33%	-19,77%	1.320	946	39,53%	29.103	21.870	33,07%	3,86%
ENTRE RIOS	1.836	1.358	2.226	35,20%	-17,52%	20.052	14.115	42,06%	120	85	138	41,18%	-13,04%	1.252	826	51,57%	21.304	14.941	42,59%	2,83%
TUCUMAN	1.744	1.121	1.963	55,58%	-11,16%	17.328	12.135	42,79%	100	61	123	63,93%	-18,70%	1.083	618	75,24%	18.411	12.753	44,37%	2,44%
CORRIENTES	1.451	1.018	1.716	42,53%	-15,44%	16.905	11.324	49,28%	158	100	199	58,00%	-20,60%	1.474	920	60,22%	18.379	12.244	50,11%	2,44%
SALTA	1.463	918	1.581	59,37%	-7,46%	14.643	10.750	36,21%	76	69	81	10,14%	-6,17%	1.009	749	34,71%	15.652	11.499	36,12%	2,08%
CHUBUT	1.209	1.014	1.555	19,23%	-22,25%	14.197	11.218	26,56%	63	29	57	117,24%	10,53%	516	375	37,60%	14.713	11.593	26,91%	1,95%
NEUQUEN	1.374	844	1.634	62,80%	-15,91%	13.966	10.196	36,98%	59	29	57	103,45%	3,51%	602	352	71,02%	14.568	10.548	38,11%	1,93%
CHACO	1.248	698	1.545	78,80%	-19,22%	12.050	8.080	49,13%	78	36	68	116,67%	14,71%	657	379	73,35%	12.707	8.459	50,22%	1,69%
RIO NEGRO	1.008	730	1.159	38,08%	-13,03%	10.712	8.046	33,13%	24	9	26	166,67%	-7,69%	281	175	60,57%	10.993	8.221	33,72%	1,46%
MISIONES	975	641	1.088	52,11%	-10,39%	10.248	7.098	44,38%	39	46	46	-15,22%	-15,22%	465	263	76,81%	10.713	7.361	45,54%	1,42%
SANTA CRUZ	977	696	1.220	40,37%	-19,92%	10.231	8.449	21,09%	49	24	39	104,17%	25,64%	425	289	47,06%	10.656	8.738	21,95%	1,41%
JUJUY	736	533	869	38,09%	-15,30%	8.387	6.423	30,58%	51	55	89	-7,27%	-42,70%	894	681	31,28%	9.281	7.104	30,64%	1,23%
TIERRA DEL FUEGO	934	682	1.050	36,95%	-11,05%	8.613	5.539	55,50%	32	37	36	-13,51%	-11,11%	402	217	85,25%	9.015	5.756	56,62%	1,20%
SAN JUAN	806	466	908	72,96%	-11,23%	7.691	5.819	32,17%	41	34	49	20,59%	-16,33%	455	308	47,73%	8.146	6.127	32,95%	1,08%
LA PAMPA	711	507	846	40,24%	-15,96%	7.843	5.476	43,22%	28	21	24	33,33%	16,67%	200	145	37,93%	8.043	5.621	43,09%	1,07%
SANTIAGO DEL ESTERO	610	393	784	55,22%	-22,19%	7.456	5.220	42,84%	36	12	29	200,00%	24,14%	346	193	79,27%	7.802	5.413	44,13%	1,04%
FORMOSA	668	433	722	54,27%	-7,48%	6.693	4.986	34,24%	21	11	25	90,91%	-16,00%	241	179	34,64%	6.934	5.165	34,25%	0,92%
SAN LUIS	612	446	702	37,22%	-12,82%	6.601	4.635	42,42%	13	9	7	44,44%	85,71%	112	84	33,33%	6.713	4.719	42,25%	0,89%
CATAMARCA	506	301	557	68,11%	-9,16%	5.111	3.375	51,44%	13	12	18	8,33%	-27,78%	97	59	64,41%	5.208	3.434	51,66%	0,69%
LA RIOJA	381	279	518	36,56%	-26,45%	4.352	3.349	29,95%	14	12	5	16,67%	180,00%	93	81	14,81%	4.445	3.430	29,59%	0,59%



Patentamientos por Provincias y Tipos -

