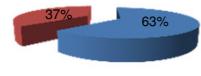




Patentamientos por Marcas - Mercado Total

	sep/11(a)	ago/11(b)	sep/10(c)	sep/09(d)	Var a-b	Var a-c	Var a-d	Ac. 11	Ac. 10	Var 11-10
Automovil	65.641	62.328	49.637	36.361	5,32%	32,24%	80,53%	526.406	399.749	31,68%
Comercial Liviano	14.859	13.875	11.782	7.785	7,09%	26,12%	90,87%	124.496	96.012	29,67%
Comercial Pesado	2.547	2.627	1.754	1.226	-3,05%	45,21%	107,75%	20.433	13.111	55,85%
Otros Pesados	1.191	1.141	878	648	4,38%	35,65%	83,80%	9.681	7.241	33,70%
Total	84.238	79.971	64.051	46.020	5,34%	31,52%	83,05%	681.016	516.113	31,95%
Prom. diario	3.829	3.635	2.911	2.092				3.661	2.775	
Dias habiles	22	22	22	22				186	186	

Patentamientos por origen		
	11-Sep	Ac. 11
Importados	52.353	429.109
Nacionales	31.885	251.907



■ Importados ■ Nacionales

Patentamientos Mensuales

	ene	feb	mar	abr	may	jun	jul	ago	sep	oct	nov	dic
2011	104.107	60.178	67.605	65.373	67.986	78.517	73.041	79.971	84.238			
2010	78.466	44.760	57.287	50.946	50.820	54.810	57.571	57.402	64.051	53.828	54.042	38.762
Var% 11-10	32,68%	34,45%	18,01%	28,32%	33,78%	43,25%	26,87%	39,32%	31,52%	-100,00%	-100,00%	-100,00%
2009	73.927	39.075	41.300	40.533	40.147	44.101	46.631	42.434	46.020	39.962	37.493	23.282
2008	85.810	46.476	44.277	56.149	56.809	49.082	58.414	51.110	56.196	51.035	35.527	19.890

Patentamientos por Marcas - Totales

Marca	sep/11(a)	Part %	sep/10(c)	Part %	ago/11(e)	Part %	Var a-c	Var a-e	2011 ene - sep	2011 Part %	2010 ene - sep	2010 Part %	Var 2011-2010
Volkswagen	15.601	18,76%	11.718	18,52%	16.673	21,12%	33,14%	-6,43%	135.761	20,19%	96.944	19,02%	40,04%
Chevrolet	15.166	18,23%	9.764	15,43%	13.238	16,77%	55,33%	14,56%	106.342	15,82%	78.854	15,47%	34,86%
Renault	11.952	14,37%	8.704	13,76%	8.970	11,36%	37,32%	33,24%	80.789	12,02%	63.264	12,41%	27,70%
Ford	10.842	13,03%	7.240	11,44%	10.262	13,00%	49,75%	5,65%	87.154	12,96%	63.384	12,44%	37,50%
Fiat	9.040	10,87%	6.449	10,19%	9.592	12,15%	40,18%	-5,75%	69.719	10,37%	52.828	10,37%	31,97%
Peugeot	6.943	8,35%	5.460	8,63%	7.284	9,23%	27,16%	-4,68%	59.497	8,85%	43.700	8,58%	36,15%
Toyota	3.315	3,99%	2.776	4,39%	2.885	3,65%	19,42%	14,90%	29.880	4,44%	25.443	4,99%	17,44%
Citroen	3.006	3,61%	2.351	3,72%	3.211	4,07%	27,86%	-6,38%	25.591	3,81%	18.667	3,66%	37,09%
Mercedes Benz	1.561	1,88%	1.169	1,85%	1.390	1,76%	33,53%	12,30%	12.752	1,90%	9.770	1,92%	30,52%
Nissan	1.242	1,49%	1.175	1,86%	694	0,88%	5,70%	78,96%	11.760	1,75%	7.453	1,46%	57,79%
Honda	904	1,09%	2.285	3,61%	1.070	1,36%	-60,44%	-15,51%	15.131	2,25%	16.543	3,25%	-8,54%
Iveco	568	0,68%	485	0,77%	601	0,76%	17,11%	-5,49%	4.496	0,67%	2.821	0,55%	59,38%
Audi	542	0,65%	330	0,52%	584	0,74%	64,24%	-7,19%	4.357	0,65%	3.371	0,66%	29,25%
Chery	421	0,51%	295	0,47%	396	0,50%	42,71%	6,31%	3.438	0,51%	1.674	0,33%	105,38%
Hyundai	361	0,43%	642	1,01%	229	0,29%	-43,77%	57,64%	5.030	0,75%	4.184	0,82%	20,22%
Dodge	309	0,37%	189	0,30%	398	0,50%	63,49%	-22,36%	3.510	0,52%	2.293	0,45%	53,07%
Scania	255	0,31%	179	0,28%	281	0,36%	42,46%	-9,25%	2.145	0,32%	1.061	0,21%	102,17%
Kia	231	0,28%	255	0,40%	308	0,39%	-9,41%	-25,00%	2.355	0,35%	2.239	0,44%	5,18%
Jeep	162	0,19%	80	0,13%	150	0,19%	102,50%	8,00%	1.083	0,16%	780	0,15%	38,85%
Volvo	136	0,16%	47	0,07%	132	0,17%	189,36%	3,03%	964	0,14%	486	0,10%	98,35%
Agrale	107	0,13%	92	0,15%	129	0,16%	16,30%	-17,05%	1.091	0,16%	682	0,13%	59,97%
Randon	100	0,12%	57	0,09%	66	0,08%	75,44%	51,52%	705	0,10%	502	0,10%	40,44%
Mitsubishi	76	0,09%	94	0,15%	83	0,11%	-19,15%	-8,43%	896	0,13%	923	0,18%	-2,93%
Puma de Tat	58	0,07%	37	0,06%	33	0,04%	56,76%	75,76%	322	0,05%	235	0,05%	37,02%
Porsche	42	0,05%	4	0,01%	8	0,01%	950,00%	425,00%	114	0,02%	83	0,02%	37,35%
Smart	42	0,05%	1	0,00%	32	0,04%	4100,00%	31,25%	346	0,05%	1	0,00%	34500,00%
Alfa Romeo	39	0,05%	39	0,06%	44	0,06%	0,00%	-11,36%	375	0,06%	202	0,04%	85,64%
Subaru	37	0,04%	80	0,13%	45	0,06%	-53,75%	-17,78%	470	0,07%	517	0,10%	-9,09%
MONTENEGRO	30	0,04%	26	0,04%	38	0,05%	15,38%	-21,05%	269	0,04%	168	0,03%	60,12%
DFM	22	0,03%	4	0,01%	24	0,03%	450,00%	-8,33%	119	0,02%	20	0,00%	495,00%
BMW	14	0,02%	312	0,49%	22	0,03%	-95,51%	-36,36%	1.595	0,24%	2.863	0,56%	-44,29%
Suzuki	11	0,01%	613	0,97%	18	0,02%	-98,21%	-38,89%	2.791	0,42%	5.850	1,15%	-52,29%
Chrysler	10	0,01%	166	0,26%	22	0,03%	-93,98%	-54,55%	732	0,11%	752	0,15%	-2,66%
Land Rover	8	0,01%	10	0,02%	5	0,01%	-20,00%	60,00%	69	0,01%	64	0,01%	7,81%
Ssangyong	7	0,01%		0,00%	3	0,00%	N/D	133,33%	10	0,00%		0,00%	N/D
Mack	5	0,01%	1	0,00%		0,00%	400,00%	N/D	7	0,00%	7	0,00%	0,00%
Mini	5	0,01%	42	0,07%	7	0,01%	-88,10%	-28,57%	242	0,04%	401	0,08%	-39,65%
Seat	5	0,01%	80	0,13%	4	0,01%	-93,75%	25,00%	382	0,06%	489	0,10%	-21,88%
Jaguar	2	0,00%		0,00%	2	0,00%	N/D	0,00%	9	0,00%	8	0,00%	12,50%
Montesur	2	0,00%	8	0,01%	1	0,00%	-75,00%	100,00%	36	0,01%	46	0,01%	-21,74%
Ferrari		0,00%		0,00%	1	0,00%	N/D	-100,00%	1	0,00%	5	0,00%	-80,00%
Maserati		0,00%		0,00%		0,00%	N/D	N/D		0,00%	1	0,00%	-100,00%
Materfer		0,00%	5	0,01%		0,00%	-100,00%	N/D	10	0,00%	10	0,00%	0,00%
Total	83.179		63.264		78.935				672.345		509.588		

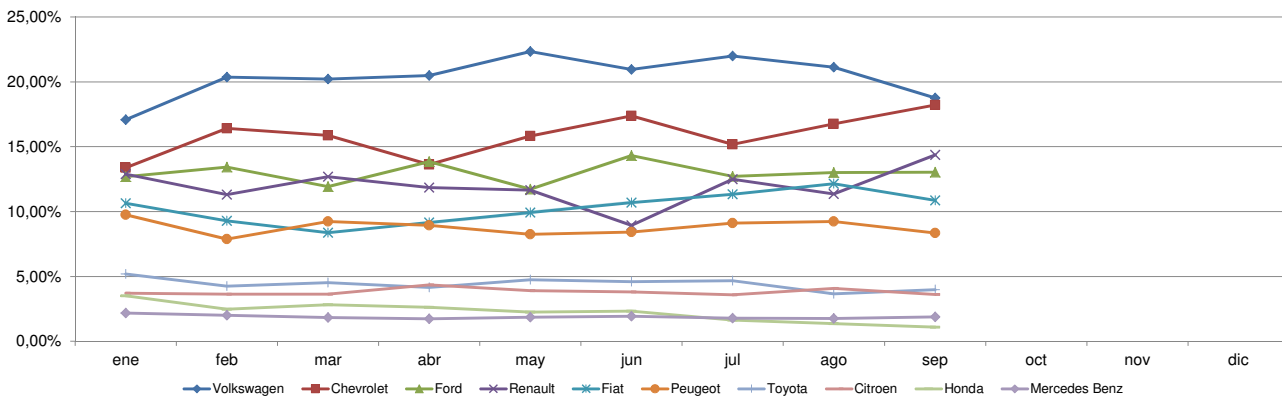


Patentamientos por Marcas - Mercado Total

Patentamientos por Marcas - Autos + Livianos								2011	2011	2010	2010	Var	
Marca	sep/11(a)	Part %	sep/10(c)	Part %	ago/11(e)	Part %	Var a-c	Var a-e	ene - sep	Part %	ene - sep	Part %	2011-2010
Volkswagen	15.433	19,17%	11.558	18,82%	16.482	21,63%	33,53%	-6,36%	133.914	20,57%	95.738	19,31%	39,88%
Chevrolet	15.166	18,84%	9.764	15,90%	13.238	17,37%	55,33%	14,56%	106.342	16,34%	78.854	15,91%	34,86%
Renault	11.873	14,75%	8.684	14,14%	8.887	11,66%	36,72%	33,60%	80.284	12,33%	63.014	12,71%	27,41%
Ford	10.371	12,88%	6.940	11,30%	9.753	12,80%	49,44%	6,34%	83.976	12,90%	60.976	12,30%	37,72%
Fiat	9.040	11,23%	6.449	10,50%	9.592	12,59%	40,18%	-5,75%	69.719	10,71%	52.828	10,66%	31,97%
Peugeot	6.943	8,62%	5.460	8,89%	7.284	9,56%	27,16%	-4,68%	59.497	9,14%	43.700	8,81%	36,15%
Toyota	3.315	4,12%	2.776	4,52%	2.885	3,79%	19,42%	14,90%	29.880	4,59%	25.443	5,13%	17,44%
Citroen	3.006	3,73%	2.351	3,83%	3.211	4,21%	27,86%	-6,38%	25.591	3,93%	18.667	3,77%	37,09%
Nissan	1.242	1,54%	1.175	1,91%	694	0,91%	5,70%	78,96%	11.760	1,81%	7.453	1,50%	57,79%
Honda	904	1,12%	2.285	3,72%	1.070	1,40%	-60,44%	-15,51%	15.131	2,32%	16.543	3,34%	-8,54%
Mercedes Benz	689	0,86%	619	1,01%	590	0,77%	11,31%	16,78%	5.884	0,90%	5.100	1,03%	15,37%
Audi	542	0,67%	330	0,54%	584	0,77%	64,24%	-7,19%	4.357	0,67%	3.371	0,68%	29,25%
Chery	421	0,52%	295	0,48%	396	0,52%	42,71%	6,31%	3.438	0,53%	1.674	0,34%	105,38%
Hyundai	350	0,43%	613	1,00%	211	0,28%	-42,90%	65,88%	4.755	0,73%	3.967	0,80%	19,86%
Dodge	309	0,38%	189	0,31%	398	0,52%	63,49%	-22,36%	3.510	0,54%	2.293	0,46%	53,07%
Kia	231	0,29%	255	0,42%	308	0,40%	-9,41%	-25,00%	2.355	0,36%	2.239	0,45%	5,18%
Iveco	180	0,22%	135	0,22%	149	0,20%	33,33%	20,81%	1.171	0,18%	758	0,15%	54,49%
Jeep	162	0,20%	80	0,13%	150	0,20%	102,50%	8,00%	1.083	0,17%	780	0,16%	38,85%
Mitsubishi	76	0,09%	94	0,15%	83	0,11%	-19,15%	-8,43%	896	0,14%	923	0,19%	-2,93%
Porsche	42	0,05%	4	0,01%	8	0,01%	950,00%	4250,00%	114	0,02%	83	0,02%	37,35%
Smart	42	0,05%	1	0,00%	32	0,04%	4100,00%	31,25%	346	0,05%	1	0,00%	34500,00%
Alfa Romeo	39	0,05%	39	0,06%	44	0,06%	0,00%	-11,36%	375	0,06%	202	0,04%	85,64%
Subaru	37	0,05%	80	0,13%	45	0,06%	-53,75%	-17,78%	470	0,07%	517	0,10%	-9,09%
Volvo	25	0,03%	20	0,03%	25	0,03%	25,00%	0,00%	223	0,03%	204	0,04%	9,31%
BMW	14	0,02%	312	0,51%	22	0,03%	-95,51%	-36,36%	1.595	0,25%	2.863	0,58%	-44,29%
Suzuki	11	0,01%	613	1,00%	18	0,02%	-98,21%	-38,89%	2.791	0,43%	5.850	1,18%	-52,29%
Chrysler	10	0,01%	166	0,27%	22	0,03%	-93,98%	-54,55%	732	0,11%	752	0,15%	-2,66%
Land Rover	8	0,01%	10	0,02%	5	0,01%	-20,00%	60,00%	69	0,01%	64	0,01%	7,81%
Ssangyong	7	0,01%		0,00%	3	0,00%	N/D	133,33%	10	0,00%		0,00%	N/D
Mini	5	0,01%	42	0,07%	7	0,01%	-88,10%	-28,57%	242	0,04%	401	0,08%	-39,65%
Seat	5	0,01%	80	0,13%	4	0,01%	-93,75%	25,00%	382	0,06%	489	0,10%	-21,88%
Jaguar	2	0,00%		0,00%	2	0,00%	N/D	0,00%	9	0,00%	8	0,00%	12,50%
Ferrari		0,00%		0,00%	1	0,00%	N/D	-100,00%	1	0,00%	5	0,00%	-80,00%
Maserati		0,00%		0,00%		0,00%	N/D	N/D		0,00%	1	0,00%	-100,00%
Total	80.500		61.419		76.203				650.902		495.761		

Patentamientos por Marcas - Camiones + Buses								2011	2011	2010	2010	Var	
Marca	sep/11(a)	Part %	sep/10(c)	Part %	ago/11(e)	Part %	Var a-c	Var a-e	ene - sep	Part %	ene - sep	Part %	2011-2010
Mercedes Benz	872	32,55%	550	29,81%	800	29,28%	58,55%	9,00%	6.868	32,03%	4.670	33,77%	47,07%
Ford	471	17,58%	300	16,26%	509	18,63%	57,00%	-7,47%	3.178	14,82%	2.408	17,42%	31,98%
Iveco	388	14,48%	350	18,97%	452	16,54%	10,86%	-14,16%	3.325	15,51%	2.063	14,92%	61,17%
Scania	255	9,52%	179	9,70%	281	10,29%	42,46%	-9,25%	2.145	10,00%	1.061	7,67%	102,17%
Volkswagen	168	6,27%	160	8,67%	191	6,99%	5,00%	-12,04%	1.847	8,61%	1.206	8,72%	53,15%
Volvo	111	4,14%	27	1,46%	107	3,92%	311,11%	3,74%	741	3,46%	282	2,04%	162,77%
Agrale	107	3,99%	92	4,99%	129	4,72%	16,30%	-17,05%	1.091	5,09%	682	4,93%	59,97%
Randon	100	3,73%	57	3,09%	66	2,42%	75,44%	51,52%	705	3,29%	502	3,63%	40,44%
Renault	79	2,95%	20	1,08%	83	3,04%	295,00%	-4,82%	505	2,36%	250	1,81%	102,00%
Puma de Tat	58	2,16%	37	2,01%	33	1,21%	56,76%	75,76%	322	1,50%	235	1,70%	37,02%
MONTENEGRO	30	1,12%	26	1,41%	38	1,39%	15,38%	-21,05%	269	1,25%	168	1,22%	60,12%
DFM	22	0,82%	4	0,22%	24	0,88%	450,00%	-8,33%	119	0,55%	20	0,14%	495,00%
Hyundai	11	0,41%	29	1,57%	18	0,66%	-62,07%	-38,89%	275	1,28%	217	1,57%	26,73%
Mack	5	0,19%	1	0,05%		0,00%	400,00%	N/D	7	0,03%	7	0,05%	0,00%
Montesur	2	0,07%	8	0,43%	1	0,04%	-75,00%	100,00%	36	0,17%	46	0,33%	-21,74%
Materfer		0,00%	5	0,27%		0,00%	-100,00%	N/D	10	0,05%	10	0,07%	0,00%
Total	2.679		1.845		2.732				21.443		13.827		

Participacion por Marcas - Evolucion Mensual

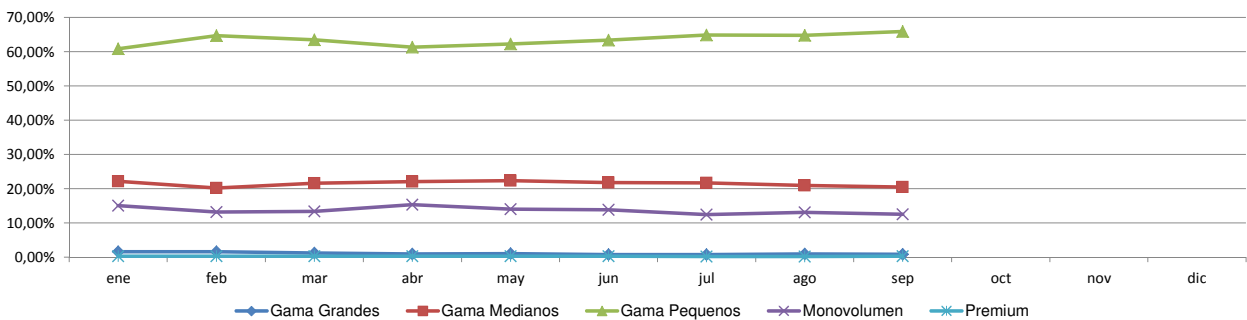




Patentamientos por Ranking de Automoviles - Mercado Total

Rank.	Modelo	Ranking Por Modelos - Automoviles									
		sep/11 (a)	sep/10 (b)	ago/11 (c)	Var a-b	Var a-c	Ac. 11	Part %	Ac. 10	Part %	Var 11-10
1	Volkswagen GOL	5.794	3.533	6.516	64,00%	-11,08%	48.673	9,25%	37.015	9,26%	31,50%
2	Chevrolet CLASSIC	4.761	3.817	4.194	24,73%	13,52%	36.764	6,98%	14.250	3,56%	157,99%
3	Peugeot 207	3.356	2.796	3.465	20,03%	-3,15%	28.323	5,38%	24.712	6,18%	14,61%
4	Renault SANDERO	3.687	2.580	2.875	42,91%	28,24%	23.428	4,45%	17.822	4,46%	31,46%
5	Ford ECOSPORT	2.511	2.140	2.204	17,34%	13,93%	22.470	4,27%	16.391	4,10%	37,09%
6	Volkswagen SURAN	2.235	1.468	2.185	52,25%	2,29%	18.257	3,47%	17.009	4,25%	7,34%
7	Volkswagen BORA	1.757	1.363	1.971	28,91%	-10,86%	17.681	3,36%	9.592	2,40%	84,33%
8	Chevrolet AVEO	2.166	1.340	1.936	61,64%	11,88%	15.387	2,92%	9.604	2,40%	60,21%
9	Chevrolet AGILE	2.010	1.423	1.671	41,25%	20,29%	14.305	2,72%	9.953	2,49%	43,73%
10	Renault CLIO	1.855	2.042	1.150	-9,16%	61,30%	13.688	2,60%	11.185	2,80%	22,38%
11	Ford FOCUS II	1.674	996	1.688	68,07%	-0,83%	13.410	2,55%	8.459	2,12%	58,53%
12	Fiat SIENA	1.640	1.271	1.829	29,03%	-10,33%	12.788	2,43%	10.711	2,68%	19,39%
13	Ford KA	1.740	1.329	1.710	30,93%	1,75%	12.706	2,41%	11.185	2,80%	13,60%
14	Fiat PALIO	1.567	1.959	1.744	-20,01%	-10,15%	12.675	2,41%	13.201	3,30%	-3,98%
15	Volkswagen VOYAGE	1.282	1.011	1.507	26,81%	-14,93%	12.500	2,37%	9.139	2,29%	36,78%
16	Fiat UNO 2010	1.451		1.711	N/D	-15,20%	11.478	2,18%		0,00%	N/D
17	Volkswagen FOX	950	1.733	795	-45,18%	19,50%	10.362	1,97%	7.967	1,99%	30,06%
18	Ford FIESTA KINETIC	1.742		1.336	N/D	30,39%	10.124	1,92%		0,00%	N/D
19	Renault LOGAN	1.240	779	812	59,18%	52,71%	8.673	1,65%	6.041	1,51%	43,57%
20	Toyota COROLLA	1.020	809	932	26,08%	9,44%	8.659	1,64%	7.126	1,78%	21,51%
21	Ford FIESTA	733	770	586	-4,81%	25,09%	8.487	1,61%	9.067	2,27%	-6,40%
22	Volkswagen VENTO	1.510	661	1.565	128,44%	-3,51%	8.165	1,55%	4.510	1,13%	81,04%
23	Citroen C3	846	455	1.000	85,93%	-15,40%	8.153	1,55%	4.438	1,11%	83,71%
24	Chevrolet CELTA	2.471		1.998	N/D	23,67%	8.132	1,54%		0,00%	N/D
25	Renault FLUENCE	1.335		954	N/D	39,94%	7.320	1,39%		0,00%	N/D
26	Citroen C4	734	1.009	887	-27,25%	-17,25%	7.271	1,38%	6.928	1,73%	4,95%
27	Chevrolet MERIVA	1.010	475	1.081	112,63%	-6,57%	7.158	1,36%	5.587	1,40%	28,12%
28	Fiat UNO	1.045	987	1.001	5,88%	4,40%	7.024	1,33%	7.556	1,89%	-7,04%
29	Fiat PUNTO	828	705	877	17,45%	-5,59%	6.899	1,31%	7.615	1,90%	-9,40%
30	Nissan TIIDA	607	821	110	-26,07%	451,82%	6.070	1,15%	5.064	1,27%	19,87%
31	Peugeot 307	463	794	515	-41,69%	-10,10%	6.024	1,14%	6.442	1,61%	-6,49%
32	Renault SYMBOL	754	637	612	18,37%	23,20%	5.965	1,13%	6.238	1,56%	-4,38%
33	Honda FIT	440	1.086	498	-59,48%	-11,65%	5.936	1,13%	7.282	1,82%	-18,48%
34	Peugeot 206	568	534	568	6,37%	0,00%	5.700	1,08%	4.197	1,05%	35,81%
35	Peugeot 408	811		944	N/D	-14,09%	5.128	0,97%		0,00%	N/D
36	Chevrolet ASTRA	486	603	532	-19,40%	-8,65%	4.895	0,93%	4.733	1,18%	3,42%
37	Renault KANGOO	637	652	611	-2,30%	4,26%	4.701	0,89%	4.919	1,23%	-4,43%
38	Peugeot PARTNER	492	389	569	26,48%	-13,53%	4.147	0,79%	2.037	0,51%	103,58%
39	Honda CITY	139	607	262	-77,10%	-46,95%	3.836	0,73%	4.395	1,10%	-12,72%
40	Fiat IDEA	388	136	431	185,29%	-9,98%	3.668	0,70%	1.922	0,48%	90,84%
41	Dodge JOURNEY	309	151	397	104,64%	-22,17%	3.470	0,66%	1.767	0,44%	96,38%
42	Chevrolet CRUZE	388	7	348	5442,86%	11,49%	3.266	0,62%	7	0,00%	46557,14%
43	Citroen PICASSO	217	302	203	-28,15%	6,90%	2.403	0,46%	2.618	0,65%	-8,21%
44	Citroen BERLINGO	257	299	252	-14,05%	1,98%	2.350	0,45%	1.705	0,43%	37,83%
45	Suzuki FUN	9	532	15	-98,31%	-40,00%	2.205	0,42%	5.078	1,27%	-56,58%
46	Nissan SENTRA	255		142	N/D	79,58%	2.072	0,39%		0,00%	N/D
47	Chevrolet CORSA	22	699	27	-96,85%	-18,52%	1.841	0,35%	21.034	5,26%	-91,25%
48	Chevrolet VECTRA	95	274	154	-65,33%	-38,31%	1.754	0,33%	2.810	0,70%	-37,58%
49	Honda CIVIC	93	187	145	-50,27%	-35,86%	1.591	0,30%	1.771	0,44%	-10,16%
50	Mercedes Benz CLASE C	197	168	165	17,26%	19,39%	1.574	0,30%	1.337	0,33%	17,73%
51	Otros	3.064	3.308	2.648	-7,38%	15,71%	26.850	5,10%	27.330	6,84%	-1,76%
Total		65.641	49.637	62.328			526.406	1	399.749		

Autos - Participacion por Segmento





Patentamientos por Ranking de Livianos y Pesados - Mercado Total

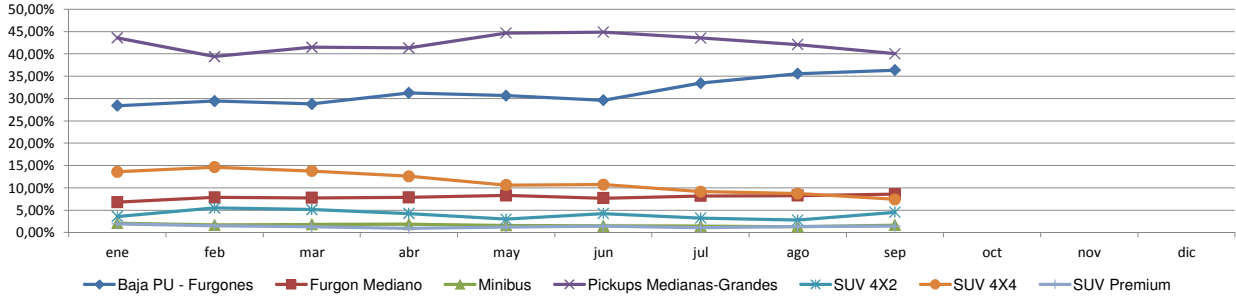
Rank.	Comercial Liviano										
	Modelo	sep/11 (a)	sep/10 (b)	ago/11 (c)	Var a-b	Var a-c	Ac. 11	Part %	Ac. 10	Part %	Var 11-10
1	Toyota HILUX	1.919	1.572	1.683	22,07%	14,02%	17.118	13,75%	14.971	15,59%	14,34%
2	Volkswagen AMAROK	1.233	1.277	1.180	-3,45%	4,49%	11.783	9,46%	4.433	4,62%	165,80%
3	Ford RANGER	1.415	1.105	1.629	28,05%	-13,14%	11.376	9,14%	10.216	10,64%	11,35%
4	Renault KANGOO FURGON	1.460	922	1.200	58,35%	21,67%	9.946	7,99%	7.808	8,13%	27,38%
5	Peugeot PARTNER FURGON	912	704	913	29,55%	-0,11%	7.553	6,07%	5.021	5,23%	50,43%
6	Chevrolet S-10	829	629	742	31,80%	11,73%	7.432	5,97%	6.899	7,19%	7,73%
7	Fiat FIORINO	898	723	713	24,20%	25,95%	6.541	5,25%	6.192	6,45%	5,64%
8	Fiat STRADA	860	316	917	172,15%	-6,22%	5.451	4,38%	2.378	2,48%	129,23%
9	Renault MASTER	539	508	447	6,10%	20,58%	3.837	3,08%	2.608	2,72%	47,12%
10	Volkswagen SAVEIRO	308	188	399	63,83%	-22,81%	3.566	2,86%	3.548	3,70%	0,51%
11	Honda CRV	219	369	154	-40,65%	42,21%	3.453	2,77%	2.780	2,90%	24,21%
12	Nissan FRONTIER	374	266	434	40,60%	-13,82%	3.119	2,51%	1.690	1,76%	84,56%
13	Citroen BERLINGO FURGON	431	195	365	121,03%	18,08%	2.870	2,31%	2.411	2,51%	19,04%
14	Mercedes Benz SPRINTER	339	251	290	35,06%	16,90%	2.658	2,14%	2.446	2,55%	8,67%
15	Toyota HILUX SW4	228	189	191	20,63%	19,37%	1.989	1,60%	1.696	1,77%	17,28%
16	Chevrolet MONTANA	294		285	N/D	3,16%	1.772	1,42%		0,00%	N/D
17	Chery TIGGO	232	194	201	19,59%	15,42%	1.626	1,31%	1.499	1,56%	8,47%
18	Toyota RAV 4	113	142	51	-20,42%	121,57%	1.494	1,20%	1.272	1,32%	17,45%
19	Ford KUGA	149	145	193	2,76%	-22,80%	1.403	1,13%	714	0,74%	96,50%
20	Ford F 100	128	178	107	-28,09%	19,63%	1.325	1,06%	1.559	1,62%	-15,01%
21	Otros	1.979	1.909	1.781	3,67%	11,12%	18.184	14,61%	15.871	16,53%	14,57%
Total		14.859	11.782	13.875			124.496	1	96.012		

Rank.	Comercial Pesado										
	Modelo	sep/11 (a)	sep/10 (b)	ago/11 (c)	Var a-b	Var a-c	Ac. 11	Part %	Ac. 10	Part %	Var 11-10
1	Iveco 170 E	193	256	245	-24,61%	-21,22%	2.005	9,81%	1.276	9,73%	57,13%
2	Ford F-4000	189	78	179	142,31%	5,59%	1.213	5,94%	575	4,39%	110,96%
3	Mercedes Benz BMO 368	103	77	89	33,77%	15,73%	1.167	5,71%	545	4,16%	114,13%
4	Mercedes Benz BMO 384	137	72	133	90,28%	3,01%	652	3,19%	968	7,38%	-32,64%
5	Volkswagen 17220	57	54	54	5,56%	5,56%	642	3,14%	355	2,71%	80,85%
6	Scania G340	95	43	93	120,93%	2,15%	620	3,03%	288	2,20%	115,28%
7	Ford CARGO 1722 E	17	102	24	-83,33%	-29,17%	610	2,99%	868	6,62%	-29,72%
8	Mercedes Benz ATEGO 1725	41	63	57	-34,92%	-28,07%	503	2,46%	327	2,49%	53,82%
9	Mercedes Benz OF 1418	22	36	51	-38,89%	-56,86%	500	2,45%	185	1,41%	170,27%
10	Iveco 450 E	99	41	87	141,46%	13,79%	496	2,43%	323	2,46%	53,56%
11	Mercedes Benz 1624	64	47	56	36,17%	14,29%	495	2,42%	183	1,40%	170,49%
12	Scania P340	51	52	51	-1,92%	0,00%	465	2,28%	188	1,43%	147,34%
13	Agrale MT15	37	22	54	68,18%	-31,48%	455	2,23%	192	1,46%	136,98%
14	Mercedes Benz O-500	49	24	57	104,17%	-14,04%	428	2,09%	169	1,29%	153,25%
15	Mercedes Benz LS 1634	39	37	37	5,41%	5,41%	427	2,09%	272	2,07%	56,99%
16	Mercedes Benz 710	63	33	50	90,91%	26,00%	413	2,02%	341	2,60%	21,11%
17	Renault PREMIUM	57	19	65	200,00%	-12,31%	389	1,90%	152	1,16%	155,92%
18	Ford CARGO 1722	133		139	N/D	-4,32%	375	1,84%		0,00%	N/D
19	Volkswagen 13180	31	43	48	-27,91%	-35,42%	365	1,79%	234	1,78%	55,98%
20	Iveco 490 S	34	17	68	100,00%	-50,00%	343	1,68%	187	1,43%	83,42%
21	Otros	1.036	638	990	62,38%	4,65%	7.870	38,52%	5.483	41,82%	43,53%
Total		2.547	1.754	2.627			20.433	1	13.111		

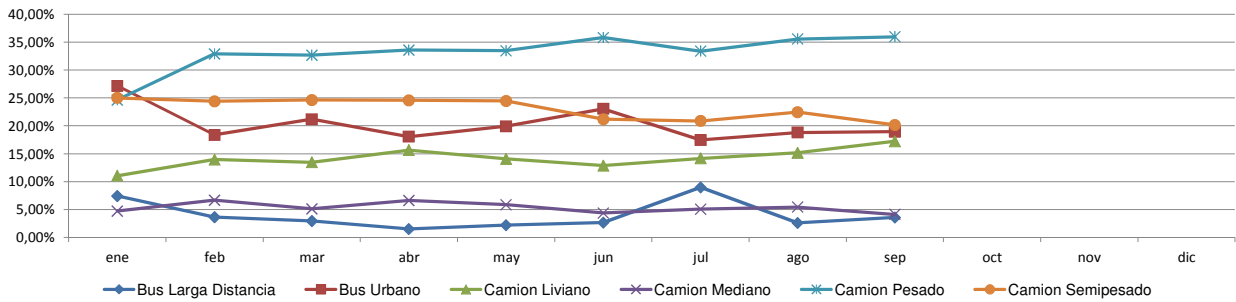


Patentamientos por Ranking de Livianos y Pesados - Mercado Total

Comercial Liviano



Comercial Pesado





Patentamientos por Provincias y Tipos -

Distrito	Automovil+Comercial Liviano							Comercial Pesado+Otros Pesados							Mercado Total					
	sep/11 (a)	sep/10 (b)	ago/11 (c)	Var a-b	Var a-c	Ac. 11	Ac. 10	Var 11-10	sep/11 (a)	sep/10 (b)	ago/11 (c)	Var a-b	Var a-c	Ac. 11	Ac. 10	Var 11-10	Ac. 11	Ac. 10	Var 11-10	Part %
GRAN BUENOS AIRES	14.191	11.091	13.459	27,95%	5,44%	114.394	88.280	29,58%	266	282	342	-5,67%	-22,22%	2.612	1.969	32,66%	117.006	90.249	29,65%	17,18%
CAPITAL FEDERAL	13.284	10.619	11.775	25,10%	12,82%	103.186	87.230	18,29%	1.110	743	1.007	49,39%	10,23%	8.373	5.754	45,52%	111.559	92.984	19,98%	16,38%
BUENOS AIRES	12.602	9.887	11.911	27,46%	5,80%	103.094	76.484	34,79%	509	282	440	80,50%	15,68%	3.508	2.371	47,95%	106.602	78.855	35,19%	15,65%
CORDOBA	7.705	6.138	7.510	25,53%	2,60%	64.769	50.647	27,88%	247	176	319	40,34%	-22,57%	2.256	1.472	53,26%	67.025	52.119	28,60%	9,84%
SANTA FE	6.947	5.205	6.788	33,47%	2,34%	56.555	40.916	38,22%	323	253	305	27,67%	5,90%	2.599	1.728	50,41%	59.154	42.644	38,72%	8,69%
MENDOZA	3.160	2.282	3.077	38,48%	2,70%	25.103	19.048	31,79%	172	123	130	39,84%	32,31%	1.182	856	38,08%	26.285	19.904	32,06%	3,86%
ENTRE RIOS	2.227	1.581	2.081	40,86%	7,02%	18.217	12.757	42,80%	138	97	137	42,27%	0,73%	1.132	741	52,77%	19.349	13.498	43,35%	2,84%
CORRIENTES	1.716	1.164	1.715	47,42%	0,06%	15.454	10.306	49,95%	199	114	151	74,56%	31,79%	1.316	820	60,49%	16.770	11.126	50,73%	2,46%
TUCUMAN	1.963	1.334	2.041	47,15%	-3,82%	15.584	11.014	41,49%	123	65	131	89,23%	-6,11%	983	557	76,48%	16.567	11.571	43,18%	2,43%
SALTA	1.581	1.270	1.671	24,49%	-5,39%	13.180	9.832	34,05%	81	72	105	12,50%	-22,86%	933	680	37,21%	14.113	10.512	34,26%	2,07%
CHUBUT	1.555	1.208	1.547	28,73%	0,52%	12.988	10.204	27,28%	57	41	44	39,02%	29,55%	453	346	30,92%	13.441	10.550	27,40%	1,97%
NEUQUEN	1.635	1.097	1.478	49,04%	10,62%	12.593	9.352	34,66%	57	29	82	96,55%	-30,49%	543	323	68,11%	13.136	9.675	35,77%	1,93%
CHACO	1.545	895	1.197	72,63%	29,07%	10.802	7.382	46,33%	68	31	70	119,35%	-2,86%	579	343	68,80%	11.381	7.725	47,33%	1,67%
RIO NEGRO	1.159	908	1.084	27,64%	6,92%	9.704	7.316	32,64%	26	26	31	0,00%	-16,13%	257	166	54,82%	9.961	7.482	33,13%	1,46%
MISIONES	1.088	809	1.123	34,49%	-3,12%	9.274	6.457	43,63%	46	30	69	53,33%	-33,33%	426	217	96,31%	9.700	6.674	45,34%	1,42%
SANTA CRUZ	1.220	999	1.047	22,12%	16,52%	9.254	7.753	19,36%	39	39	60	0,00%	-35,00%	376	265	41,89%	9.630	8.018	20,10%	1,41%
JUJUY	848	709	853	19,61%	-0,59%	7.630	5.890	29,54%	84	61	82	37,70%	2,44%	838	626	33,87%	8.468	6.516	29,96%	1,24%
TIERRA DEL FUEGO	1.050	703	976	49,36%	7,58%	7.679	4.857	58,10%	36	45	53	-20,00%	-32,08%	370	180	105,56%	8.049	5.037	59,80%	1,18%
LA PAMPA	846	644	809	31,37%	4,57%	7.132	4.969	43,53%	24	26	25	-7,69%	-4,00%	172	124	38,71%	7.304	5.093	43,41%	1,07%
SAN JUAN	908	581	850	56,28%	6,82%	6.885	5.353	28,62%	49	45	58	8,89%	-15,52%	414	274	51,09%	7.299	5.627	29,71%	1,07%
SANTIAGO DEL ESTERO	770	572	860	34,62%	-10,47%	6.832	4.827	41,54%	29	20	51	45,00%	-43,14%	310	181	71,27%	7.142	5.008	42,61%	1,05%
FORMOSA	722	524	642	37,79%	12,46%	6.027	4.554	32,35%	25	14	32	78,57%	-21,88%	220	168	30,95%	6.247	4.722	32,30%	0,92%
SAN LUIS	702	497	670	41,25%	4,78%	5.989	4.189	42,97%	7	4	18	75,00%	-61,11%	99	75	32,00%	6.088	4.264	42,78%	0,89%
CATAMARCA	558	345	545	61,74%	2,39%	4.606	3.074	49,84%	18	8	8	125,00%	125,00%	84	47	78,72%	4.690	3.121	50,27%	0,69%
LA RIOJA	518	357	494	45,10%	4,86%	3.971	3.070	29,35%	5	6	18	-16,67%	-72,22%	79	69	14,49%	4.050	3.139	29,02%	0,59%



Patentamientos por Provincias y Tipos -

