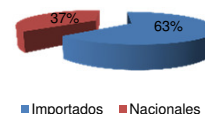




Patentamientos por Marcas - Mercado Total

	jul/11(a)	jun/11(b)	jul/10(c)	jul/09(d)	Var a-b	Var a-c	Var a-d	Ac. 11	Ac. 10	Var 11-10
Automovil	55.205	59.788	44.278	36.544	-7,67%	24,68%	51,06%	394.492	306.246	28,82%
Comercial Liviano	12.999	14.396	11.033	8.293	-9,70%	17,82%	56,75%	94.916	73.200	29,67%
Comercial Pesado	2.388	2.347	1.450	1.172	1,75%	64,69%	103,75%	15.164	9.633	57,42%
Otros Pesados	1.082	1.080	810	622	0,19%	33,58%	73,95%	7.300	5.581	30,80%
Total	71.674	77.611	57.571	46.631	-7,65%	24,50%	53,70%	511.872	394.660	29,70%
Prom. diario	3.413	3.696	2.741	2.221				3.605	2.760	
Dias habiles	21	21	21	21				142	143	

Patentamientos por origen		
	11-Jul	Ac. 11
Importados	45.254	323.769
Nacionales	26.420	188.103



Patentamientos Mensuales

	ene	feb	mar	abr	may	jun	jul	ago	sep	oct	nov	dic
2011	103.770	59.806	67.056	64.717	67.238	77.611	71.674					
2010	78.466	44.760	57.287	50.946	50.820	54.810	57.571	57.402	64.052	53.784	54.001	38.673
Var% 11-10	32,25%	33,61%	17,05%	27,03%	32,31%	41,60%	24,50%	-100,00%	-100,00%	-100,00%	-100,00%	-100,00%
2009	73.927	39.075	41.300	40.533	40.147	44.101	46.631	42.434	46.020	39.962	37.493	23.282
2008	85.810	46.476	44.277	56.149	56.809	49.082	58.414	51.110	56.196	51.035	35.527	19.890

Patentamientos por Marcas - Totales

Marca	jul/11(a)	Part %	jul/10(c)	Part %	jun/11(e)	Part %	Var a-c	Var a-e	ene - jul	Part %	ene - jul	Part %	2011-2010
Volkswagen	15.573	22,03%	8.222	14,47%	16.062	20,95%	89,41%	-3,04%	102.454	20,27%	75.537	19,39%	35,63%
Chevrolet	10.727	15,18%	8.811	15,50%	13.319	17,37%	21,75%	-19,46%	77.165	15,27%	60.365	15,49%	27,83%
Ford	8.977	12,70%	8.027	14,12%	10.985	14,33%	11,84%	-18,28%	65.398	12,94%	49.358	12,67%	32,50%
Renault	8.814	12,47%	8.971	15,78%	6.865	8,95%	-1,75%	28,39%	59.280	11,73%	46.819	12,02%	26,62%
Fiat	7.997	11,31%	5.234	9,21%	8.212	10,71%	52,79%	-2,62%	50.576	10,01%	40.948	10,51%	23,51%
Peugeot	6.444	9,12%	5.939	10,45%	6.426	8,38%	8,50%	0,28%	44.783	8,86%	32.598	8,37%	37,38%
Toyota	3.314	4,69%	2.578	4,54%	3.528	4,60%	28,55%	-6,07%	23.497	4,65%	20.183	5,18%	16,42%
Citroen	2.506	3,55%	2.063	3,63%	2.909	3,79%	21,47%	-13,85%	19.123	3,78%	13.914	3,57%	37,44%
Honda	1.162	1,64%	1.522	2,68%	1.787	2,33%	-23,65%	-34,97%	13.080	2,59%	12.260	3,15%	6,69%
Nissan	622	0,88%	1.083	1,91%	1.418	1,85%	-42,57%	-56,14%	9.773	1,93%	5.316	1,36%	83,84%
Mercedes Benz	1.275	1,80%	1.026	1,81%	1.490	1,94%	24,27%	-14,43%	9.733	1,93%	7.480	1,92%	30,12%
Hyundai	343	0,49%	368	0,65%	507	0,66%	-6,79%	-32,35%	4.415	0,87%	3.051	0,78%	44,71%
Iveco	456	0,65%	367	0,65%	481	0,63%	24,25%	-5,20%	3.310	0,66%	1.884	0,48%	75,69%
Audi	466	0,66%	364	0,64%	518	0,68%	28,02%	-10,04%	3.200	0,63%	2.669	0,69%	19,90%
Dodge	262	0,37%	269	0,47%	232	0,30%	-2,60%	12,93%	2.781	0,55%	1.852	0,48%	50,16%
Suzuki	55	0,08%	433	0,76%	105	0,14%	-87,30%	-47,62%	2.742	0,54%	4.722	1,21%	-41,93%
Chery	391	0,55%	210	0,37%	258	0,34%	86,19%	51,55%	2.595	0,51%	1.184	0,30%	119,17%
Kia	203	0,29%	276	0,49%	254	0,33%	-26,45%	-20,08%	1.797	0,36%	1.695	0,44%	6,02%
Scania	343	0,49%	110	0,19%	293	0,38%	211,82%	17,06%	1.597	0,32%	758	0,19%	110,69%
BMW	35	0,05%	270	0,48%	49	0,06%	-87,04%	-28,57%	1.547	0,31%	2.305	0,59%	-32,89%
Agrale	101	0,14%	56	0,10%	132	0,17%	80,36%	-23,48%	854	0,17%	481	0,12%	77,55%
Jeep	97	0,14%	68	0,12%	175	0,23%	42,65%	-44,57%	766	0,15%	632	0,16%	21,20%
Mitsubishi	88	0,12%	76	0,13%	86	0,11%	15,79%	2,33%	731	0,14%	713	0,18%	2,52%
Volvo	136	0,19%	61	0,11%	134	0,17%	122,95%	1,49%	696	0,14%	378	0,10%	84,13%
Chrysler	43	0,06%	106	0,19%	58	0,08%	-59,43%	-25,86%	694	0,14%	464	0,12%	49,57%
Randon	65	0,09%	55	0,10%	94	0,12%	18,18%	-30,85%	537	0,11%	384	0,10%	39,84%
Subaru	29	0,04%	59	0,10%	38	0,05%	-50,85%	-23,68%	386	0,08%	376	0,10%	2,66%
Seat	3	0,00%	77	0,14%	32	0,04%	-96,10%	-90,63%	371	0,07%	332	0,09%	11,75%
Alfa Romeo	38	0,05%	24	0,04%	53	0,07%	58,33%	-28,30%	289	0,06%	144	0,04%	100,69%
Smart	28	0,04%		0,00%	36	0,05%	N/D	-22,22%	271	0,05%		0,00%	N/D
Puma de Tat	27	0,04%	15	0,03%	45	0,06%	80,00%	-40,00%	231	0,05%	187	0,05%	23,53%
Mini	8	0,01%	49	0,09%	9	0,01%	-83,67%	-11,11%	230	0,05%	334	0,09%	-31,14%
MONTENEGRO	21	0,03%	16	0,03%	43	0,06%	31,25%	-51,16%	200	0,04%	128	0,03%	56,25%
DFM	16	0,02%	6	0,01%	12	0,02%	166,67%	33,33%	72	0,01%	13	0,00%	453,85%
Porsche	2	0,00%	11	0,02%	14	0,02%	-81,82%	-85,71%	63	0,01%	62	0,02%	1,61%
Land Rover	7	0,01%	9	0,02%	9	0,01%	-22,22%	-22,22%	55	0,01%	46	0,01%	19,57%
Montesur	7	0,01%	3	0,01%	4	0,01%	133,33%	75,00%	33	0,01%	35	0,01%	-5,71%
Materfer	2	0,00%		0,00%		0,00%	N/D	N/D	10	0,00%	1	0,00%	900,00%
Jaguar	2	0,00%	1	0,00%		0,00%	100,00%	N/D	5	0,00%	8	0,00%	-37,50%
Mack		0,00%		0,00%		0,00%	N/D	N/D	2	0,00%	5	0,00%	-60,00%
Ferrari		0,00%		0,00%		0,00%	N/D	N/D		0,00%	4	0,00%	-100,00%
Maserati		0,00%		0,00%		0,00%	N/D	N/D		0,00%	1	0,00%	-100,00%
Total	70.685		56.835		76.672				505.342		389.626		

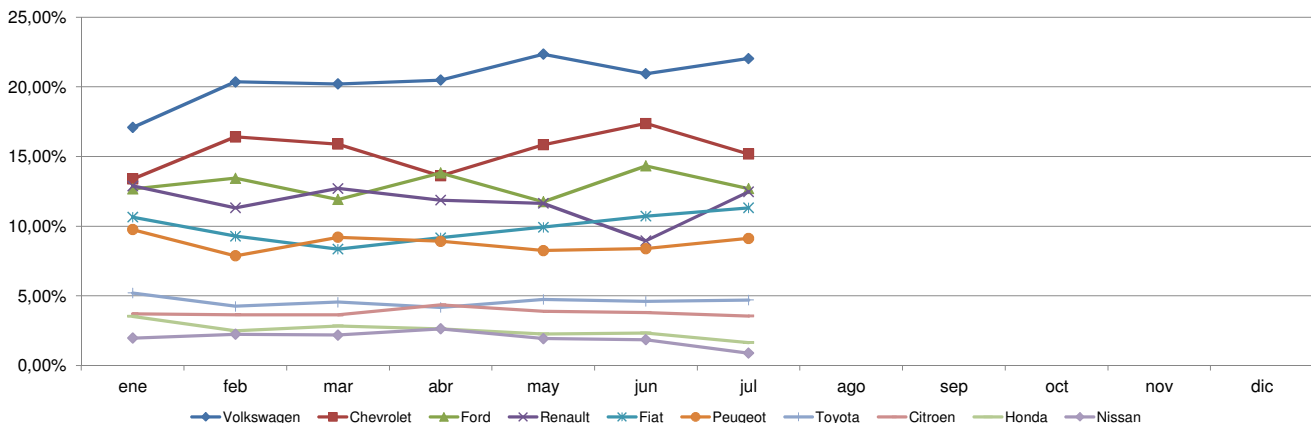


Patentamientos por Marcas - Mercado Total

Patentamientos por Marcas - Autos + Livianos									2011	2011	2010	2010	Var
Marca	jul/11(a)	Part %	jul/10(c)	Part %	jun/11(e)	Part %	Var a-c	Var a-e	ene - jul	Part %	ene - jul	Part %	2011-2010
Volkswagen	15.371	22,54%	8.084	14,62%	15.838	21,35%	90,14%	-2,95%	100.975	20,63%	74.622	19,67%	35,32%
Chevrolet	10.727	15,73%	8.811	15,93%	13.319	17,95%	21,75%	-19,46%	77.165	15,77%	60.365	15,91%	27,83%
Ford	8.618	12,64%	7.734	13,98%	10.717	14,45%	11,43%	-19,59%	63.222	12,92%	47.546	12,53%	32,97%
Renault	8.733	12,80%	8.938	16,16%	6.799	9,17%	-2,29%	28,45%	58.938	12,04%	46.612	12,28%	26,44%
Fiat	7.997	11,73%	5.234	9,46%	8.212	11,07%	52,79%	-2,62%	50.576	10,33%	40.948	10,79%	23,51%
Peugeot	6.444	9,45%	5.939	10,74%	6.426	8,66%	8,50%	0,28%	44.783	9,15%	32.598	8,59%	37,38%
Toyota	3.314	4,86%	2.578	4,66%	3.528	4,76%	28,55%	-6,07%	23.497	4,80%	20.183	5,32%	16,42%
Citroen	2.506	3,67%	2.063	3,73%	2.909	3,92%	21,47%	-13,85%	19.123	3,91%	13.914	3,67%	37,44%
Honda	1.162	1,70%	1.522	2,75%	1.787	2,41%	-23,65%	-34,97%	13.080	2,67%	12.260	3,23%	6,69%
Nissan	622	0,91%	1.083	1,96%	1.418	1,91%	-42,57%	-56,14%	9.773	2,00%	5.316	1,40%	83,84%
Mercedes Benz	507	0,74%	578	1,05%	703	0,95%	-12,28%	-27,88%	4.573	0,93%	3.942	1,04%	16,01%
Hyundai	314	0,46%	331	0,60%	466	0,63%	-5,14%	-32,62%	4.169	0,85%	2.892	0,76%	44,16%
Audi	466	0,68%	364	0,66%	518	0,70%	28,02%	-10,04%	3.200	0,65%	2.669	0,70%	19,90%
Dodge	262	0,38%	269	0,49%	232	0,31%	-2,60%	12,93%	2.781	0,57%	1.852	0,49%	50,16%
Suzuki	55	0,08%	433	0,78%	105	0,14%	-87,30%	-47,62%	2.742	0,56%	4.722	1,24%	-41,93%
Chery	391	0,57%	210	0,38%	258	0,35%	86,19%	51,55%	2.595	0,53%	1.184	0,31%	119,17%
Kia	203	0,30%	276	0,50%	254	0,34%	-26,45%	-20,08%	1.797	0,37%	1.695	0,45%	6,02%
BMW	35	0,05%	270	0,49%	49	0,07%	-87,04%	-28,57%	1.547	0,32%	2.305	0,61%	-32,89%
Iveco	108	0,16%	86	0,16%	117	0,16%	25,58%	-7,69%	838	0,17%	538	0,14%	55,76%
Jeep	97	0,14%	68	0,12%	175	0,24%	42,65%	-44,57%	766	0,16%	632	0,17%	21,20%
Mitsubishi	88	0,13%	76	0,14%	86	0,12%	15,79%	2,33%	731	0,15%	713	0,19%	2,52%
Chrysler	43	0,06%	106	0,19%	58	0,08%	-59,43%	-25,86%	694	0,14%	464	0,12%	49,57%
Subaru	29	0,04%	59	0,11%	38	0,05%	-50,85%	-23,68%	386	0,08%	376	0,10%	2,66%
Seat	3	0,00%	77	0,14%	32	0,04%	-96,10%	-90,63%	371	0,08%	332	0,09%	11,75%
Alfa Romeo	38	0,06%	24	0,04%	53	0,07%	58,33%	-28,30%	289	0,06%	144	0,04%	100,69%
Smart	28	0,04%		0,00%	36	0,05%	N/D	-22,22%	271	0,06%		0,00%	N/D
Mini	8	0,01%	49	0,09%	9	0,01%	-83,67%	-11,11%	230	0,05%	334	0,09%	-31,14%
Volvo	24	0,04%	28	0,05%	19	0,03%	-14,29%	26,32%	173	0,04%	167	0,04%	3,59%
Porsche	2	0,00%	11	0,02%	14	0,02%	-81,82%	-85,71%	63	0,01%	62	0,02%	1,61%
Land Rover	7	0,01%	9	0,02%	9	0,01%	-22,22%	-22,22%	55	0,01%	46	0,01%	19,57%
Jaguar	2	0,00%	1	0,00%		0,00%	100,00%	N/D	5	0,00%	8	0,00%	-37,50%
Ferrari		0,00%		0,00%		0,00%	N/D	N/D		0,00%	4	0,00%	-100,00%
Maserati		0,00%		0,00%		0,00%	N/D	N/D		0,00%	1	0,00%	-100,00%
Total	68.204		55.311		74.184				489.408		379.446		

Patentamientos por Marcas - Camiones + Buses									2011	2011	2010	2010	Var
Marca	jul/11(a)	Part %	jul/10(c)	Part %	jun/11(e)	Part %	Var a-c	Var a-e	ene - jul	Part %	ene - jul	Part %	2011-2010
Mercedes Benz	768	30,96%	448	29,40%	787	31,63%	71,43%	-2,41%	5.160	32,38%	3.538	34,75%	45,85%
Iveco	348	14,03%	281	18,44%	364	14,63%	23,84%	-4,40%	2.472	15,51%	1.346	13,22%	83,66%
Ford	359	14,47%	293	19,23%	268	10,77%	22,53%	33,96%	2.176	13,66%	1.812	17,80%	20,09%
Scania	343	13,83%	110	7,22%	293	11,78%	211,82%	17,06%	1.597	10,02%	758	7,45%	110,69%
Volkswagen	202	8,14%	138	9,06%	224	9,00%	46,38%	-9,82%	1.479	9,28%	915	8,99%	61,64%
Agrale	101	4,07%	56	3,67%	132	5,31%	80,36%	-23,48%	854	5,36%	481	4,72%	77,55%
Randon	65	2,62%	55	3,61%	94	3,78%	18,18%	-30,85%	537	3,37%	384	3,77%	39,84%
Volvo	112	4,51%	33	2,17%	115	4,62%	239,39%	-2,61%	523	3,28%	211	2,07%	147,87%
Renault	81	3,26%	33	2,17%	66	2,65%	145,45%	22,73%	342	2,15%	207	2,03%	65,22%
Hyundai	29	1,17%	37	2,43%	41	1,65%	-21,62%	-29,27%	246	1,54%	159	1,56%	54,72%
Puma de Tat	27	1,09%	15	0,98%	45	1,81%	80,00%	-40,00%	231	1,45%	187	1,84%	23,53%
MONTENEGRO	21	0,85%	16	1,05%	43	1,73%	31,25%	-51,16%	200	1,26%	128	1,26%	56,25%
DFM	16	0,64%	6	0,39%	12	0,48%	166,67%	33,33%	72	0,45%	13	0,13%	453,85%
Montesur	7	0,28%	3	0,20%	4	0,16%	133,33%	75,00%	33	0,21%	35	0,34%	-5,71%
Materfer	2	0,08%		0,00%		0,00%	N/D	N/D	10	0,06%	1	0,01%	900,00%
Mack		0,00%		0,00%		0,00%	N/D	N/D	2	0,01%	5	0,05%	-60,00%
Total	2.481		1.524		2.488				15.934		10.180		

Participacion por Marcas - Evolucion Mensual





Patentamientos por Ranking de Automoviles - Mercado Total

Rank.	Modelo	Ranking Por Modelos - Automoviles									
		jul/11 (a)	jul/10 (b)	jun/11 (c)	Var a-b	Var a-c	Ac. 11	Part %	Ac. 10	Part %	Var 11-10
1	Volkswagen GOL	5.976	2.860	6.330	108,95%	-5,59%	35.963	9,12%	30.350	9,91%	18,49%
2	Chevrolet CLASSIC	3.181	3.403	4.240	-6,52%	-24,98%	27.533	6,98%	7.406	2,42%	271,77%
3	Peugeot 207	2.838	3.764	2.941	-24,60%	-3,50%	21.261	5,39%	18.723	6,11%	13,56%
4	Ford ECOSPORT	2.038	2.228	2.386	-8,53%	-14,59%	17.594	4,46%	12.593	4,11%	39,71%
5	Renault SANDERO	3.003	2.312	1.886	29,89%	59,23%	16.692	4,23%	13.051	4,26%	27,90%
6	Volkswagen BORA	2.185	776	2.076	181,57%	5,25%	13.809	3,50%	7.008	2,29%	97,05%
7	Volkswagen SURAN	1.775	1.215	1.792	46,09%	-0,95%	13.691	3,47%	14.112	4,61%	-2,98%
8	Chevrolet AVEO	1.621	986	1.473	64,40%	10,05%	11.168	2,83%	7.075	2,31%	57,85%
9	Renault CLIO	1.108	1.873	1.206	-40,84%	-8,13%	10.589	2,68%	7.297	2,38%	45,11%
10	Chevrolet AGILE	1.511	974	1.744	55,13%	-13,36%	10.503	2,66%	7.382	2,41%	42,28%
11	Ford FOCUS II	1.489	1.060	1.523	-40,47%	-2,23%	9.969	2,53%	6.493	2,12%	53,53%
12	Volkswagen VOYAGE	1.487	768	1.274	93,62%	16,72%	9.596	2,43%	7.325	2,39%	31,00%
13	Fiat PALIO	1.449	1.215	1.504	19,26%	-3,66%	9.275	2,35%	10.062	3,29%	-7,82%
14	Fiat SIENA	1.381	1.173	1.276	17,73%	8,23%	9.231	2,34%	8.069	2,63%	14,40%
15	Ford KA	936	1.232	1.507	-24,03%	-37,89%	9.174	2,33%	8.830	2,88%	3,90%
16	Volkswagen FOX	889	995	1.263	-10,65%	-29,61%	8.540	2,16%	5.002	1,63%	70,73%
17	Fiat UNO 2010	1.779		1.449	N/D	22,77%	8.222	2,08%		0,00%	N/D
18	Ford FIESTA	961	1.504	837	-36,10%	14,81%	7.109	1,80%	7.190	2,35%	-1,13%
19	Ford FIESTA KINETIC	1.287		2.183	N/D	-41,04%	6.961	1,76%		0,00%	N/D
20	Toyota COROLLA	1.038	713	1.210	45,58%	-14,21%	6.647	1,68%	5.625	1,84%	18,17%
21	Renault LOGAN	826	975	609	-15,28%	35,63%	6.561	1,66%	4.649	1,52%	41,13%
22	Citroen C3	694	444	1.194	-56,31%	-41,88%	6.218	1,58%	3.503	1,14%	77,50%
23	Citroen C4	596	715	697	-16,64%	-14,49%	5.592	1,42%	4.988	1,63%	12,11%
24	Nissan TIIDA	102	682	705	-85,04%	-85,53%	5.324	1,35%	3.676	1,20%	44,83%
25	Fiat PUNTO	705	691	740	2,03%	-4,73%	5.141	1,30%	6.200	2,02%	-17,08%
26	Volkswagen VENTO	1.344	405	1.335	231,85%	0,67%	5.047	1,28%	3.284	1,07%	53,68%
27	Chevrolet MERIVA	841	651	1.109	29,19%	-24,17%	5.011	1,27%	4.516	1,47%	10,96%
28	Peugeot 307	481	599	486	-19,70%	-1,03%	4.998	1,27%	5.013	1,64%	-0,30%
29	Renault FLUENCE	741		642	N/D	15,42%	4.989	1,26%		0,00%	N/D
30	Honda FIT	403	649	860	-37,90%	-53,14%	4.959	1,26%	5.313	1,73%	-6,66%
31	Fiat UNO	625	711	715	-12,10%	-12,59%	4.929	1,25%	5.782	1,89%	-14,75%
32	Renault SYMBOL	656	1.039	575	-36,86%	14,09%	4.551	1,15%	4.908	1,60%	-7,27%
33	Peugeot 206	707	378	708	87,04%	-0,14%	4.516	1,14%	3.112	1,02%	45,12%
34	Chevrolet ASTRA	481	435	572	10,57%	-15,91%	3.841	0,97%	3.547	1,16%	8,29%
35	Chevrolet CELTA	1.408		1.756	N/D	-19,82%	3.604	0,91%		0,00%	N/D
36	Renault KANGOO	562	663	500	-15,23%	12,40%	3.420	0,87%	3.726	1,22%	-8,21%
37	Honda CITY	367	370	235	-0,81%	56,17%	3.419	0,87%	3.443	1,12%	-0,70%
38	Peugeot 408	869		817	N/D	6,36%	3.341	0,85%		0,00%	N/D
39	Peugeot PARTNER	475	293	468	62,12%	1,50%	3.054	0,77%	1.305	0,43%	134,02%
40	Fiat IDEA	345	146	492	136,30%	-29,88%	2.818	0,71%	1.599	0,52%	76,24%
41	Dodge JOURNEY	261	237	229	10,13%	13,97%	2.742	0,70%	1.407	0,46%	94,88%
42	Chevrolet CRUZE	340		445	N/D	-23,60%	2.505	0,63%		0,00%	N/D
43	Suzuki FUN	52	343	92	-84,84%	-43,48%	2.162	0,55%	4.118	1,34%	-47,50%
44	Citroen PICASSO	244	285	215	-14,39%	13,49%	1.962	0,50%	2.006	0,66%	-2,19%
45	Citroen BERLINGO	194	288	203	-32,64%	-4,43%	1.812	0,46%	1.067	0,35%	69,82%
46	Chevrolet CORSA	35	775	86	-95,48%	-59,30%	1.779	0,45%	19.647	6,42%	-90,95%
47	Nissan SENTRA	164		225	N/D	-27,11%	1.666	0,42%		0,00%	N/D
48	Chevrolet VECTRA	150	273	205	-45,05%	-26,83%	1.490	0,38%	2.284	0,75%	-34,76%
49	Hyundai i 10	42	63	135	-33,33%	-68,89%	1.470	0,37%	410	0,13%	258,54%
50	Honda CIVIC	76	194	139	-60,82%	-45,32%	1.348	0,34%	1.361	0,44%	-0,96%
51	Otros	2.487	2.923	2.499	-14,92%	-0,48%	20.696	5,25%	21.789	7,11%	-5,02%
Total		55.205	44.278	59.788			394.492	1	306.246		



Patentamientos por Ranking de Livianos y Pesados - Mercado Total

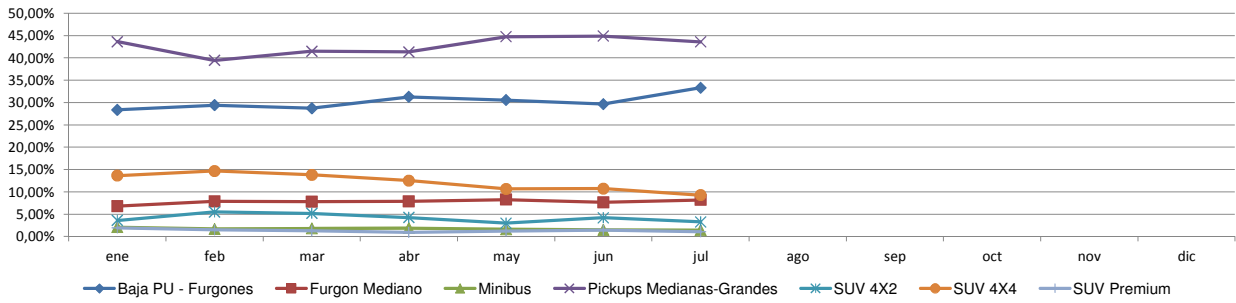
Rank.	Comercial Liviano										
	Modelo	jul/11 (a)	jul/10 (b)	jun/11 (c)	Var a-b	Var a-c	Ac. 11	Part %	Ac. 10	Part %	Var 11-10
1	Toyota HILUX	1.943	1.520	1.839	27,83%	5,66%	13.411	14,13%	12.012	16,41%	11,65%
2	Volkswagen AMAROK	1.116	549	1.217	103,28%	-8,30%	9.312	9,81%	2.427	3,32%	283,68%
3	Ford RANGER	1.334	1.084	1.707	23,06%	-21,85%	8.207	8,65%	8.002	10,93%	2,56%
4	Renault KANGOO FURGON	1.119	1.264	877	-11,47%	27,59%	7.196	7,58%	5.911	8,08%	21,74%
5	Chevrolet S-10	719	822	1.057	-12,53%	-31,98%	5.834	6,15%	5.385	7,36%	8,34%
6	Peugeot PARTNER FURGON	783	627	678	24,88%	15,49%	5.665	5,97%	3.665	5,01%	54,57%
7	Fiat FIORINO	560	734	769	-23,71%	-27,18%	4.872	5,13%	4.883	6,67%	-0,23%
8	Fiat STRADA	787	250	827	214,80%	-4,84%	3.652	3,85%	1.799	2,46%	103,00%
9	Honda CRV	293	288	527	1,74%	-44,40%	3.064	3,23%	1.889	2,58%	62,20%
10	Volkswagen SAVEIRO	365	303	339	20,46%	7,67%	2.832	2,98%	3.110	4,25%	-8,94%
11	Renault MASTER	440	241	326	82,57%	34,97%	2.816	2,97%	1.799	2,46%	56,53%
12	Nissan FRONTIER	343	314	460	9,24%	-25,43%	2.299	2,42%	1.134	1,55%	102,73%
13	Citroen BERLINGO FURGON	328	256	333	28,13%	-1,50%	2.044	2,15%	1.961	2,68%	4,23%
14	Mercedes Benz SPRINTER	288	262	332	9,92%	-13,25%	2.011	2,12%	1.923	2,63%	4,58%
15	Toyota HILUX SW4	232	179	212	29,61%	9,43%	1.563	1,65%	1.330	1,82%	17,52%
16	Toyota RAV 4	55	131	177	-58,02%	-68,93%	1.322	1,39%	974	1,33%	35,73%
17	Chevrolet MONTANA	183		309	N/D	-40,78%	1.186	1,25%		0,00%	N/D
18	Chery TIGGO	184	179	140	2,79%	31,43%	1.180	1,24%	1.146	1,57%	2,97%
19	Ford F 100	139	139	118	0,00%	17,80%	1.076	1,13%	1.204	1,64%	-10,63%
20	Ford KUGA	140	136	163	2,94%	-14,11%	1.053	1,11%	445	0,61%	136,63%
21	Otros	1.648	1.755	1.989	-6,10%	-17,14%	14.321	15,09%	12.201	16,67%	17,38%
Total		12.999	11.033	14.396			94.916	1	73.200		

Rank.	Comercial Pesado										
	Modelo	jul/11 (a)	jul/10 (b)	jun/11 (c)	Var a-b	Var a-c	Ac. 11	Part %	Ac. 10	Part %	Var 11-10
1	Iveco 170 E	203	183	229	10,93%	-11,35%	1.560	10,29%	761	7,90%	104,99%
2	Mercedes Benz 1618L	94	67	172	40,30%	-45,35%	935	6,17%	381	3,96%	145,41%
3	Ford F-4000	171	75	145	128,00%	17,93%	836	5,51%	424	4,40%	97,17%
4	Ford CARGO 1722 E	25	102	45	-75,49%	-44,44%	563	3,71%	658	6,83%	-14,44%
5	Volkswagen 17220	60	34	79	76,47%	-24,05%	530	3,50%	255	2,65%	107,84%
6	Scania G340	61	21	74	190,48%	-17,57%	432	2,85%	212	2,20%	103,77%
7	Mercedes Benz OF 1418	63	20	97	215,00%	-35,05%	425	2,80%	103	1,07%	312,62%
8	Mercedes Benz ATEGO 1725	60	34	51	76,47%	17,65%	401	2,64%	221	2,29%	81,45%
9	Mercedes Benz 1418	65	53	53	22,64%	22,64%	373	2,46%	779	8,09%	-52,12%
10	Mercedes Benz 1624	70	36	47	94,44%	48,94%	373	2,46%	96	1,00%	288,54%
11	Agrale MT15	43	20	67	115,00%	-35,82%	364	2,40%	137	1,42%	165,69%
12	Scania P340	75	16	90	368,75%	-16,67%	358	2,36%	107	1,11%	234,58%
13	Mercedes Benz LS 1634	43	25	58	72,00%	-25,86%	347	2,29%	200	2,08%	73,50%
14	Mercedes Benz O-500	68	31	39	119,35%	74,36%	322	2,12%	125	1,30%	157,60%
15	Iveco 450 E	64	51	59	25,49%	8,47%	307	2,02%	234	2,43%	31,20%
16	Mercedes Benz 710	47	41	27	14,63%	74,07%	298	1,97%	277	2,88%	7,58%
17	Volkswagen 13180	45	25	44	80,00%	2,27%	285	1,88%	161	1,67%	77,02%
18	Renault PREMIUM	64	16	47	300,00%	36,17%	266	1,75%	117	1,21%	127,35%
19	Agrale MT12	25	10	47	150,00%	-46,81%	244	1,61%	151	1,57%	61,59%
20	Iveco 490 S	39	9	27	333,33%	44,44%	241	1,59%	146	1,52%	65,07%
21	Otros	1.003	581	850	72,63%	18,00%	5.704	37,62%	4.088	42,44%	39,53%
Total		2.388	1.450	2.347			15.164	1	9.633		

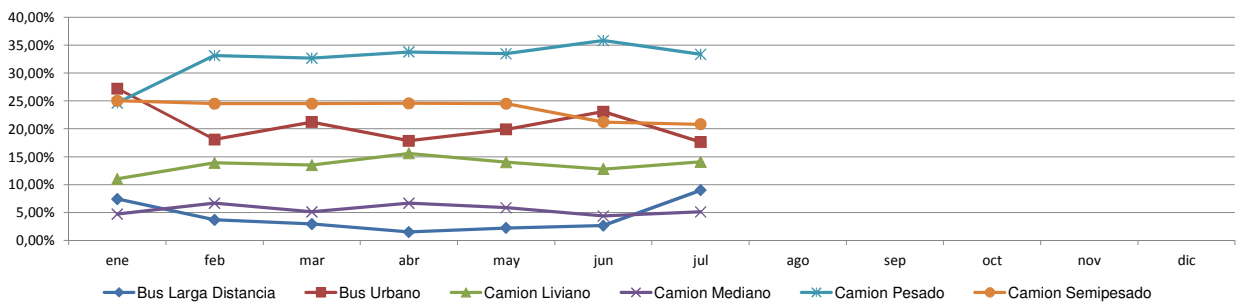


Patentamientos por Ranking de Livianos y Pesados - Mercado Total

Comercial Liviano



Comercial Pesado





Patentamientos por Provincias y Tipos -

Distrito	Automovil+Comercial Liviano							Comercial Pesado+Otros Pesados							Mercado Total					
	jul/11 (a)	jul/10 (b)	jun/11 (c)	Var a-b	Var a-c	Ac. 11	Ac. 10	Var 11-10	jul/11 (a)	jul/10 (b)	jun/11 (c)	Var a-b	Var a-c	Ac. 11	Ac. 10	Var 11-10	Ac. 11	Ac. 10	Var 11-10	Part %
GRAN BUENOS AIRES	11.780	9.823	13.036	19,92%	-9,63%	85.008	67.579	25,79%	324	173	304	87,28%	6,58%	1.946	1.432	35,89%	86.954	69.011	26,00%	16,99%
CAPITAL FEDERAL	10.952	9.635	11.908	13,67%	-8,03%	77.518	66.931	15,82%	904	737	945	22,66%	-4,34%	6.245	4.319	44,59%	83.763	71.250	17,56%	16,36%
BUENOS AIRES	10.834	8.728	12.107	24,13%	-10,51%	77.312	58.201	32,84%	402	275	402	46,18%	0,00%	2.530	1.796	40,87%	79.842	59.997	33,08%	15,60%
CORDOBA	6.800	5.698	7.481	19,34%	-9,10%	49.498	38.723	27,83%	232	161	235	44,10%	-1,28%	1.689	1.092	54,67%	51.187	39.815	28,56%	10,00%
SANTA FE	5.893	4.735	6.764	24,46%	-12,88%	42.347	31.024	36,50%	276	174	284	58,62%	-2,82%	1.949	1.245	56,55%	44.296	32.269	37,27%	8,65%
MENDOZA	2.713	2.142	2.760	26,66%	-1,70%	18.860	14.567	29,47%	159	81	121	96,30%	31,40%	881	593	48,57%	19.741	15.160	30,22%	3,86%
ENTRE RIOS	2.002	1.579	2.192	26,79%	-8,67%	13.910	9.815	41,72%	153	85	120	80,00%	27,50%	856	564	51,77%	14.766	10.379	42,27%	2,88%
CORRIENTES	1.531	1.111	1.776	37,80%	-13,80%	12.009	8.060	49,00%	164	89	174	84,27%	-5,75%	966	603	60,20%	12.975	8.663	49,77%	2,53%
TUCUMAN	1.627	1.175	1.754	38,47%	-7,24%	11.570	8.506	36,02%	117	68	120	72,06%	-2,50%	728	416	75,00%	12.298	8.922	37,84%	2,40%
SALTA	1.443	1.012	1.337	42,59%	7,93%	9.929	7.481	32,72%	85	97	106	-12,37%	-19,81%	746	522	42,91%	10.675	8.003	33,39%	2,09%
CHUBUT	1.383	1.078	1.409	28,29%	-1,85%	9.887	7.891	25,29%	43	18	32	138,89%	34,38%	351	274	28,10%	10.238	8.165	25,39%	2,00%
NEUQUEN	1.420	1.017	1.281	39,63%	10,85%	9.482	7.209	31,53%	51	35	70	45,71%	-27,14%	402	251	60,16%	9.884	7.460	32,49%	1,93%
CHACO	1.214	715	1.179	69,79%	2,97%	8.042	5.643	42,51%	79	32	73	146,88%	8,22%	443	284	55,99%	8.485	5.927	43,16%	1,66%
RIO NEGRO	1.017	802	1.140	26,81%	-10,79%	7.439	5.586	33,17%	26	13	23	100,00%	13,04%	200	125	60,00%	7.639	5.711	33,76%	1,49%
MISIONES	945	717	1.129	31,80%	-16,30%	7.063	4.980	41,83%	57	29	68	96,55%	-16,18%	311	164	89,63%	7.374	5.144	43,35%	1,44%
SANTA CRUZ	933	865	880	7,86%	6,02%	6.987	5.885	18,73%	47	36	29	30,56%	62,07%	276	195	41,54%	7.263	6.080	19,46%	1,42%
JUJUY	743	598	773	24,25%	-3,88%	5.917	4.594	28,80%	144	61	114	136,07%	26,32%	666	519	28,32%	6.583	5.113	28,75%	1,29%
TIERRA DEL FUEGO	790	593	829	33,22%	-4,70%	5.648	3.519	60,50%	48	10	44	380,00%	9,09%	281	115	144,35%	5.929	3.634	63,15%	1,16%
LA PAMPA	765	558	811	37,10%	-5,67%	5.471	3.821	43,18%	22	7	21	214,29%	4,76%	124	85	45,88%	5.595	3.906	43,24%	1,09%
SAN JUAN	695	634	755	9,62%	-7,95%	5.130	4.177	22,82%	37	31	56	19,35%	-33,93%	304	197	54,31%	5.434	4.374	24,23%	1,06%
SANTIAGO DEL ESTERO	659	494	763	33,40%	-13,63%	5.202	3.724	39,69%	27	17	39	58,82%	-30,77%	230	138	66,67%	5.432	3.862	40,65%	1,06%
FORMOSA	646	470	643	37,45%	0,47%	4.603	3.505	31,33%	37	17	20	117,65%	85,00%	163	131	24,43%	4.766	3.636	31,08%	0,93%
SAN LUIS	621	496	619	25,20%	0,32%	4.604	3.237	42,23%	15	7	12	114,29%	25,00%	74	65	13,85%	4.678	3.302	41,67%	0,91%
CATAMARCA	455	314	504	44,90%	-9,72%	3.502	2.401	45,86%	11	4	12	175,00%	-8,33%	59	34	73,53%	3.561	2.435	46,24%	0,70%
LA RIOJA	343	322	354	6,52%	-3,11%	2.470	2.387	3,48%	10	3	3	233,33%	233,33%	44	55	-20,00%	2.514	2.442	2,95%	0,49%



Patentamientos por Provincias y Tipos -

